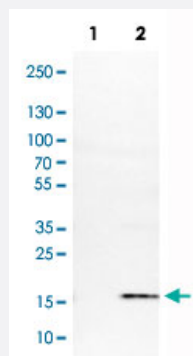


S100A4 monoclonal antibody, clone CL0239

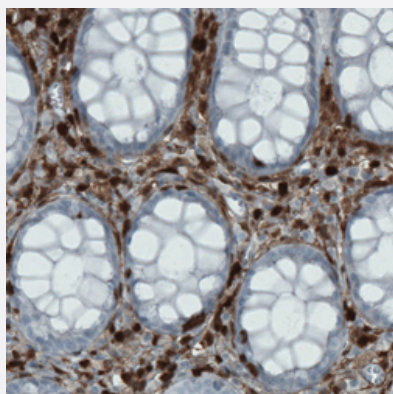
Catalog # MAB15575 Size 100 uL

Applications



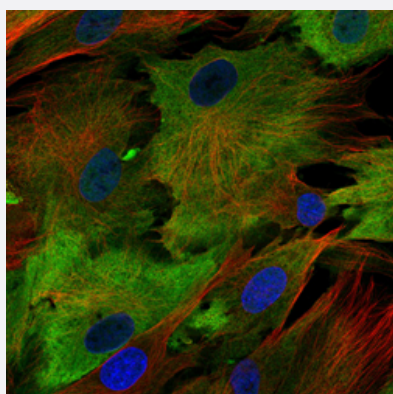
Western Blot (Transfected lysate)

Western Blot analysis of Lane 1: negative control (vector only transfected HEK293T cell lysate) and Lane 2: over-expression lysate (co-expressed with a C-terminal myc-DDK tag in mammalian HEK293T cells) with S100A4 monoclonal antibody, clone CL0239 (Cat # MAB15575).



Immunohistochemistry (Formalin/PFA-fixed paraffin-embedded sections)

Immunohistochemical staining (Formalin-fixed paraffin-embedded sections) of human rectum with S100A4 monoclonal antibody, clone CL0239 (Cat # MAB15575) shows strong immunoreactivity in a subset of lymphoid cells.



Immunofluorescence

Immunofluorescent staining of BJ cells with S100A4 monoclonal antibody, clone CL0239 (Cat # MAB15575) (Green) shows specific staining in the plasma membrane. Microtubule and nuclear probes are visualized in red and blue, respectively (where available).

Specification

Product Description	Mouse monoclonal antibody raised against partial recombinant human S100A4.
Immunogen	Recombinant protein corresponding to human S100A4.
Epitope	This antibody binds to an epitope located within the peptide sequence CNEFFEGFPDKQPRKK as determined by overlapping synthetic peptides.
Sequence	MACPLEKALDVMVSTFHKYSGKEGDKFKLNKSELKELLTRELP SFLGKRTDEAAAFQKLMSNLDS NRDNEVDFQEYCVFLSCIAMMCNEFFEGFPDKQPRKK
Host	Mouse
Reactivity	Human
Form	Liquid
Purification	Protein A purification
Isotype	IgG2b
Recommend Usage	Immunofluorescence (1-4 ug/mL) Immunohistochemistry (Formalin/PFA-fixed paraffin-embedded sections) (1:2500-1:5000) Western Blot (1:500-1:1000) The optimal working dilution should be determined by the end user.
Storage Buffer	In PBS, pH 7.2 (40% glycerol, 0.02% sodium azide).
Storage Instruction	Store at 4°C. For long term storage store at -20°C. Aliquot to avoid repeated freezing and thawing.
Note	This product contains sodium azide: a POISONOUS AND HAZARDOUS SUBSTANCE which should be handled by trained staff only.

Applications

- Western Blot (Transfected lysate)

Western Blot analysis of Lane 1: negative control (vector only transfected HEK293T cell lysate) and Lane 2: over-expression lysate (co-expressed with a C-terminal myc-DDK tag in mammalian HEK293T cells) with S100A4 monoclonal antibody, clone CL0239 (Cat # MAB15575).

- Immunohistochemistry (Formalin/PFA-fixed paraffin-embedded sections)

Immunohistochemical staining (Formalin-fixed paraffin-embedded sections) of human rectum with S100A4 monoclonal antibody, clone CL0239 (Cat # MAB15575) shows strong immunoreactivity in a subset of lymphoid cells.

- Immunofluorescence

Immunofluorescent staining of BJ cells with S100A4 monoclonal antibody, clone CL0239 (Cat # MAB15575) (Green) shows specific staining in the plasma membrane. Microtubule and nuclear probes are visualized in red and blue, respectively (where available).

Gene Info — S100A4

Entrez GeneID [6275](#)

Protein Accession# [P26447](#)

Gene Name S100A4

Gene Alias 18A2, 42A, CAPL, FSP1, MTS1, P9KA, PEL98

Gene Description S100 calcium binding protein A4

Omim ID [114210](#)

Gene Ontology [Hyperlink](#)

Gene Summary The protein encoded by this gene is a member of the S100 family of proteins containing 2 EF-hand calcium-binding motifs. S100 proteins are localized in the cytoplasm and/or nucleus of a wide range of cells, and involved in the regulation of a number of cellular processes such as cell cycle progression and differentiation. S100 genes include at least 13 members which are located as a cluster on chromosome 1q21. This protein may function in motility, invasion, and tubulin polymerization. Chromosomal rearrangements and altered expression of this gene have been implicated in tumor metastasis. Multiple alternatively spliced variants, encoding the same protein, have been identified. [provided by RefSeq]

Other Designations OTTHUMP00000015467|OTTHUMP00000015468|OTTHUMP00000015469|OTTHUMP00000032895|S100 calcium binding protein A4 (calcium protein, calvasculin, metastasin, murine placental homolog)|S100 calcium-binding protein A4|S100 calcium-binding protein A4 (calcium prote

Disease

- [Dermatitis](#)
- [Genetic Predisposition to Disease](#)
- [Liver Cirrhosis](#)