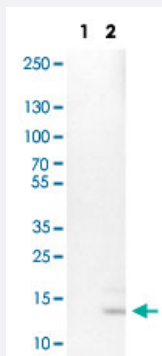


# RNASE7 monoclonal antibody, clone CL0223

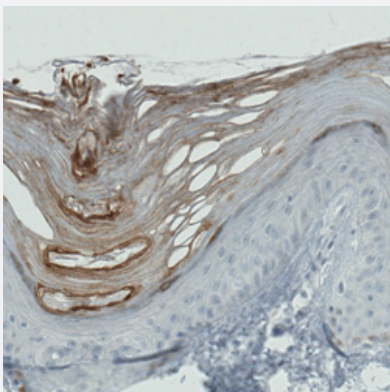
Catalog # MAB15567      Size 100 uL

## Applications



### Western Blot (Transfected lysate)

Western Blot analysis of Lane 1: negative control (vector only transfected HEK293T cell lysate) and Lane 2: over-expression lysate (co-expressed with a C-terminal myc-DDK tag in mammalian HEK293T cells) with RNASE7 monoclonal antibody, clone CL0223 (Cat # MAB15567).



### Immunohistochemistry (Formalin/PFA-fixed paraffin-embedded sections)

Immunohistochemical staining (Formalin-fixed paraffin-embedded sections) of human skin with RNASE7 monoclonal antibody, clone CL0223 (Cat # MAB15567) shows strong immunoreactivity in the outer layer of keratinized squamous epithelium.

## Specification

<b>Product Description</b>	Mouse monoclonal antibody raised against partial recombinant human RNASE7.
<b>Immunogen</b>	Recombinant protein corresponding to human RNASE7.
<b>Epitope</b>	This antibody binds to an epitope located within the peptide sequence LTMCKLTSGKYPNCR as determined by overlapping synthetic peptides.
<b>Sequence</b>	<p>KGMTSSQWFKIQHMQPSPQACNSAMKNINKHTKRCKDLNTFLHEPFSSVAATCQTPKIACKNGD</p> <p>KNCHQSHGPPVSLTMCCKLTSGKYPNCRYKEKRQNKSYVACKPPQKKDSQQFHLVPVHLDRV</p>
<b>Host</b>	Mouse

Reactivity	Human
Form	Liquid
Purification	Protein A purification
Isotype	IgG1
Recommend Usage	Immunohistochemistry (Formalin/PFA-fixed paraffin-embedded sections) (1:50-1:200) Western Blot (1:500-1:1000) The optimal working dilution should be determined by the end user.
Storage Buffer	In PBS, pH 7.2 (40% glycerol, 0.02% sodium azide).
Storage Instruction	Store at 4°C. For long term storage store at -20°C. Aliquot to avoid repeated freezing and thawing.
Note	This product contains sodium azide: a POISONOUS AND HAZARDOUS SUBSTANCE which should be handled by trained staff only.

## Applications

- Western Blot (Transfected lysate)

Western Blot analysis of Lane 1: negative control (vector only transfected HEK293T cell lysate) and Lane 2: over-expression lysate (co-expressed with a C-terminal myc-DDK tag in mammalian HEK293T cells) with RNASE7 monoclonal antibody, clone CL0223 (Cat # MAB15567).

- Immunohistochemistry (Formalin/PFA-fixed paraffin-embedded sections)

Immunohistochemical staining (Formalin-fixed paraffin-embedded sections) of human skin with RNASE7 monoclonal antibody, clone CL0223 (Cat # MAB15567) shows strong immunoreactivity in the outer layer of keratinized squamous epithelium.

## Gene Info — RNASE7

Entrez GeneID	<a href="#">84659</a>
Protein Accession#	<a href="#">Q9H1E1</a>
Gene Name	RNASE7
Gene Alias	MGC133220
Gene Description	ribonuclease, RNase A family, 7
Gene Ontology	<a href="#">Hyperlink</a>

**Gene Summary**

RNASE7 is a member of the RNase A superfamily that has broad-spectrum antimicrobial activity and ribonuclease activity (Harder and Schroder, 2002 [PubMed 12244054]; Zhang et al., 2003 [PubMed 12527768]).[supplied by OMIM]

**Other Designations**

ribonuclease 7