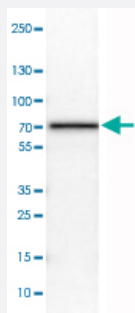


# SLC27A5 monoclonal antibody, clone CL0215

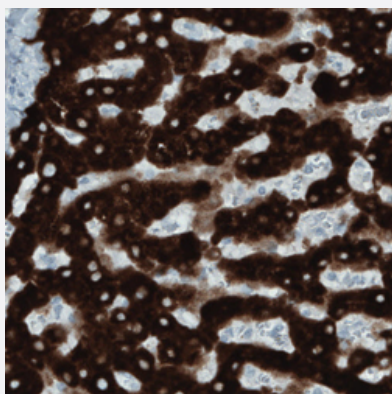
Catalog # MAB15564      Size 100 uL

## Applications



### Western Blot (Tissue lysate)

Western Blot analysis of human liver tissue lysate with SLC27A5 monoclonal antibody, clone CL0215 (Cat # MAB15564).



### Immunohistochemistry (Formalin/PFA-fixed paraffin-embedded sections)

Immunohistochemical staining (Formalin-fixed paraffin-embedded sections) of human liver with SLC27A5 monoclonal antibody, clone CL0215 (Cat # MAB15564) shows strong immunoreactivity in hepatocytes.

## Specification

<b>Product Description</b>	Mouse monoclonal antibody raised against partial recombinant human SLC27A5.
<b>Immunogen</b>	Recombinant protein corresponding to human SLC27A5.
<b>Epitope</b>	This antibody binds to an epitope located within the peptide sequence ESLEEILPKL as determined by overlapping synthetic peptides.
<b>Sequence</b>	RVLVVD PDLRESLEEILPKLQAENIRCFYLSHTSPTPGVGALGAALDAAPSHVPADLRAGITWRS PALFIYSGTTGLPKPAILTHERVLQMSKMLSLSGATADDVVYTVLPLYHVMGLVVG
<b>Host</b>	Mouse

Reactivity	Human
Form	Liquid
Purification	Protein A purification
Isotype	IgG1
Recommend Usage	Immunohistochemistry (Formalin/PFA-fixed paraffin-embedded sections) (1:500-1:1000) Western Blot (1:500-1:1000) The optimal working dilution should be determined by the end user.
Storage Buffer	In PBS, pH 7.2 (40% glycerol, 0.02% sodium azide).
Storage Instruction	Store at 4°C. For long term storage store at -20°C. Aliquot to avoid repeated freezing and thawing.
Note	This product contains sodium azide: a POISONOUS AND HAZARDOUS SUBSTANCE which should be handled by trained staff only.

## Applications

- Western Blot (Tissue lysate)

Western Blot analysis of human liver tissue lysate with SLC27A5 monoclonal antibody, clone CL0215 (Cat # MAB15564).

- Immunohistochemistry (Formalin/PFA-fixed paraffin-embedded sections)

Immunohistochemical staining (Formalin-fixed paraffin-embedded sections) of human liver with SLC27A5 monoclonal antibody, clone CL0215 (Cat # MAB15564) shows strong immunoreactivity in hepatocytes.

## Gene Info — SLC27A5

Entrez GeneID	<a href="#">10998</a>
Protein Accession#	<a href="#">Q9Y2P5</a>
Gene Name	SLC27A5
Gene Alias	ACSB, ACSVL6, FACVL3, FATP5, FLJ22987, VLACSR, VLCS-H2, VLCSH2
Gene Description	solute carrier family 27 (fatty acid transporter), member 5
Omim ID	<a href="#">603314</a>
Gene Ontology	<a href="#">Hyperlink</a>

**Gene Summary**

The protein encoded by this gene is an isozyme of very long-chain acyl-CoA synthetase (VLCS). It is capable of activating very long-chain fatty-acids containing 24- and 26-carbons. It is expressed in liver and associated with endoplasmic reticulum but not with peroxisomes. Its primary role is in fatty acid elongation or complex lipid synthesis rather than in degradation. This gene has a mouse ortholog. [provided by RefSeq]

**Other Designations**

fatty-acid-Coenzyme A ligase, very long-chain 3|very long-chain acyl-CoA synthetase homolog 2|very long-chain acyl-CoA synthetase-related protein

## Pathway

- [Metabolic pathways](#)
- [PPAR signaling pathway](#)
- [Primary bile acid biosynthesis](#)

## Disease

- [Diabetes Mellitus](#)
- [Genetic Predisposition to Disease](#)