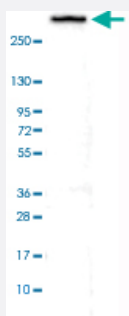


NES monoclonal antibody, clone CL0197

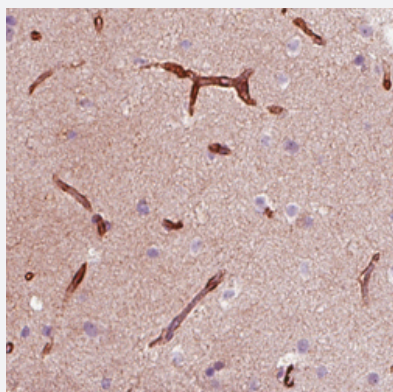
Catalog # MAB15557 Size 100 uL

Applications



Western Blot (Cell lysate)

Western Blot analysis of U-251 MG cell lysate with NES monoclonal antibody, clone CL0197 (Cat # MAB15557).



Immunohistochemistry (Formalin/PFA-fixed paraffin-embedded sections)

Immunohistochemical staining (Formalin-fixed paraffin-embedded sections) of human cerebral cortex with NES monoclonal antibody, clone CL0197 (Cat # MAB15557) shows strong immunoreactivity in the endothelial cells.

Specification

Product Description	Mouse monoclonal antibody raised against partial recombinant human NES.
Immunogen	Recombinant protein corresponding to human NES.
Epitope	This antibody binds to an epitope located within the peptide sequence VGGLGDPGHL as determined by overlapping synthetic peptides.
Sequence	DPEGQSQQVGAPGLQAPQGLPEAIEPLVEDDVAPGGDQASPEVMLGSEPAMGESAAAGAEPPGPGQGVGGLGDPGHLTREEVMEPPLEESLEAKRVQGLEGPRKDLEEAGGLGTEFSELP
Host	Mouse

Reactivity	Human
Form	Liquid
Purification	Protein A purification
Isotype	IgG1
Recommend Usage	Immunohistochemistry (Formalin/PFA-fixed paraffin-embedded sections) (1:2500-1:5000) Western Blot (1:100-1:250) The optimal working dilution should be determined by the end user.
Storage Buffer	In PBS, pH 7.2 (40% glycerol, 0.02% sodium azide).
Storage Instruction	Store at 4°C. For long term storage store at -20°C. Aliquot to avoid repeated freezing and thawing.
Note	This product contains sodium azide: a POISONOUS AND HAZARDOUS SUBSTANCE which should be handled by trained staff only.

Applications

- Western Blot (Cell lysate)

Western Blot analysis of U-251 MG cell lysate with NES monoclonal antibody, clone CL0197 (Cat # MAB15557).

- Immunohistochemistry (Formalin/PFA-fixed paraffin-embedded sections)

Immunohistochemical staining (Formalin-fixed paraffin-embedded sections) of human cerebral cortex with NES monoclonal antibody, clone CL0197 (Cat # MAB15557) shows strong immunoreactivity in the endothelial cells.

Gene Info — NES

Entrez GeneID	10763
Protein Accession#	P48681
Gene Name	NES
Gene Alias	FLJ21841, Nbla00170
Gene Description	nestin
Omim ID	600915
Gene Ontology	Hyperlink

Gene Summary

Nestin is an intermediate filament protein that was first identified with a monoclonal antibody by Hockfield and McKay (1985) [PubMed 4078630]. It is expressed predominantly in stem cells of the central nervous system in the neural tube. Upon terminal neural differentiation, nestin is downregulated and replaced by neurofilaments.[supplied by OMIM]

Other Designations

OTTHUMP00000032198

Disease

- [Atherosclerosis](#)
- [Coronary Disease](#)