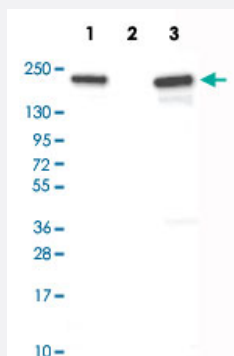


ATAD2 monoclonal antibody, clone CL0182

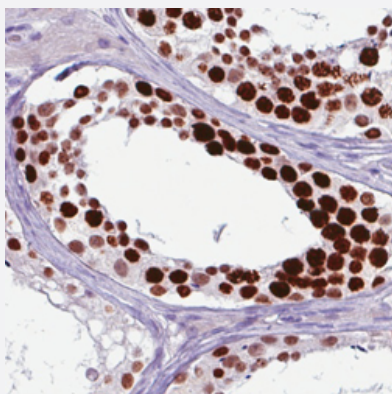
Catalog # MAB15553 Size 100 uL

Applications



Western Blot (Cell lysate)

Western Blot analysis of Lane 1: over-expression lysate (co-expressed with a C-terminal myc-DDK tag in mammalian HEK293T cells), Lane 2: negative control (vector only transfected HEK293T cell lysate) and Lane 3: U-251 cell lysate with ATAD2 monoclonal antibody, clone CL0182 (Cat # MAB15553).



Immunohistochemistry (Formalin/PFA-fixed paraffin-embedded sections)

Immunohistochemical staining (Formalin-fixed paraffin-embedded sections) of human testis with ATAD2 monoclonal antibody, clone CL0182 (Cat # MAB15553) shows strong nuclear positivity in seminiferous tubules.

Specification

Product Description	Mouse monoclonal antibody raised against partial recombinant human ATAD2.
Immunogen	Recombinant protein corresponding to human ATAD2.
Epitope	This antibody binds to an epitope located within the peptide sequence VGDKRSDPEQ as determined by overlapping synthetic peptides.
Sequence	TAYAIKEELDEDFEQLCEEIQESRKKRGCSSSKYAPSYHVMKQNSTLVGDKRSDPEQNEKLKTPSTPVACSTPAQLKRKIRKKSNNWYLGTIKKRRKISQAKDDSQNAIDHK
Host	Mouse

Reactivity	Human
Form	Liquid
Purification	Protein A purification
Isotype	IgG1
Recommend Usage	Immunohistochemistry (Formalin/PFA-fixed paraffin-embedded sections) (1:500-1:1000) Western Blot (1:500-1:1000) The optimal working dilution should be determined by the end user.
Storage Buffer	In PBS, pH 7.2 (40% glycerol, 0.02% sodium azide).
Storage Instruction	Store at 4°C. For long term storage store at -20°C. Aliquot to avoid repeated freezing and thawing.
Note	This product contains sodium azide: a POISONOUS AND HAZARDOUS SUBSTANCE which should be handled by trained staff only.

Applications

- Western Blot (Cell lysate)

Western Blot analysis of Lane 1: over-expression lysate (co-expressed with a C-terminal myc-DDK tag in mammalian HEK293T cells), Lane 2: negative control (vector only transfected HEK293T cell lysate) and Lane 3: U-251 cell lysate with ATAD2 monoclonal antibody, clone CL0182 (Cat # MAB15553).

- Immunohistochemistry (Formalin/PFA-fixed paraffin-embedded sections)

Immunohistochemical staining (Formalin-fixed paraffin-embedded sections) of human testis with ATAD2 monoclonal antibody, clone CL0182 (Cat # MAB15553) shows strong nuclear positivity in seminiferous tubules.

Gene Info — ATAD2

Entrez GeneID	29028
Protein Accession#	Q6PL18
Gene Name	ATAD2
Gene Alias	ANCCA, DKFZp667N1320, MGC131938, MGC142216, MGC29843, MGC5254, PRO2000
Gene Description	ATPase family, AAA domain containing 2
Gene Ontology	Hyperlink

Gene Summary

A large family of ATPases has been described, whose key feature is that they share a conserved region of about 220 amino acids that contains an ATP-binding site. The proteins that belong to this family either contain one or two AAA (ATPases Associated with diverse cellular Activities) domains. AAA family proteins often perform chaperone-like functions that assist in the assembly, operation, or disassembly of protein complexes. The protein encoded by this gene contains two AAA domains, as well as a bromodomain. [provided by RefSeq]

Other Designations

-

Publication Reference

- [ATAD2 is highly expressed in ovarian carcinomas and indicates poor prognosis.](#)

Wan WN, Zhang YX, Wang XM, Liu YJ, Zhang YQ, Que YH, Zhao WJ.

Asian Pacific Journal of Cancer Prevention 2014 Jan; 15(6):2777.

Application: IHC-P, WB-Ti, Human, Human ovarian Carcinomas