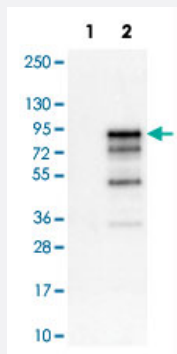


CHGA monoclonal antibody, clone CL0166

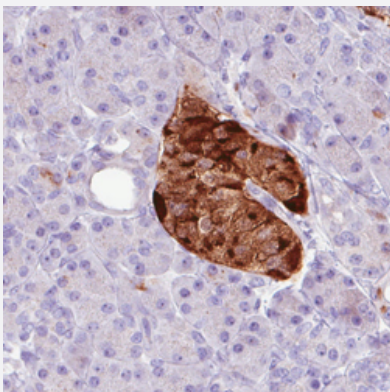
Catalog # MAB15547 Size 100 uL

Applications



Western Blot (Transfected lysate)

Western Blot analysis of Lane 1: negative control (vector only transfected HEK293T cell lysate) and Lane 2: over-expression lysate (co-expressed with a C-terminal myc-DDK tag in mammalian HEK293T cells) with CHGA monoclonal antibody, clone CL0166 (Cat # MAB15547).



Immunohistochemistry (Formalin/PFA-fixed paraffin-embedded sections)

Immunohistochemical staining (Formalin-fixed paraffin-embedded sections) of human pancreas with CHGA monoclonal antibody, clone CL0166 (Cat # MAB15547) shows strong positivity in endocrine islets of Langerhans.

Specification

Product Description	Mouse monoclonal antibody raised against partial recombinant human CHGA.
Immunogen	Recombinant protein corresponding to human CHGA.
Epitope	This antibody binds to an epitope located within the peptide sequence HSGFEDELSEVLENQ as determined by overlapping synthetic peptides.
Sequence	NSPMNKGDTSEVMKCEVISDTLSKPSPMPVSQECFETLRGDERILSILRHQNLKELQDLALQGA KERAHQQKKHSGFEDELSEVLENQSSQAELKEAVEEPSSKDVMEKREDSKEAEKSGEATDGA RPQALPEPMQESK

Host	Mouse
Reactivity	Human
Form	Liquid
Purification	Protein A purification
Isotype	IgG1
Recommend Usage	Immunohistochemistry (Formalin/PFA-fixed paraffin-embedded sections) (1:1000-1:2500) Western Blot (1:500-1:1000) The optimal working dilution should be determined by the end user.
Storage Buffer	In PBS, pH 7.2 (40% glycerol, 0.02% sodium azide).
Storage Instruction	Store at 4°C. For long term storage store at -20°C. Aliquot to avoid repeated freezing and thawing.
Note	This product contains sodium azide: a POISONOUS AND HAZARDOUS SUBSTANCE which should be handled by trained staff only.

Applications

- Western Blot (Transfected lysate)

Western Blot analysis of Lane 1: negative control (vector only transfected HEK293T cell lysate) and Lane 2: over-expression lysate (co-expressed with a C-terminal myc-DDK tag in mammalian HEK293T cells) with CHGA monoclonal antibody, clone CL0166 (Cat # MAB15547).

- Immunohistochemistry (Formalin/PFA-fixed paraffin-embedded sections)

Immunohistochemical staining (Formalin-fixed paraffin-embedded sections) of human pancreas with CHGA monoclonal antibody, clone CL0166 (Cat # MAB15547) shows strong positivity in endocrine islets of Langerhans.

Gene Info — CHGA

Entrez GeneID	1113
Protein Accession#	P10645
Gene Name	CHGA
Gene Alias	CGA
Gene Description	chromogranin A (parathyroid secretory protein 1)
Omim ID	118910

Gene Ontology

[Hyperlink](#)

Gene Summary

The protein encoded by this gene is a member of the chromogranin/secretogranin family of neuro endocrine secretory proteins. It is found in secretory vesicles of neurons and endocrine cells. This gene product is a precursor to three biologically active peptides; vasostatin, pancreastatin, and parastatin. These peptides act as autocrine or paracrine negative modulators of the neuroendocrine system. Other peptides, including chromostatin, beta-granin, WE-14 and GE-25, are also derived from the full-length protein. However, biological activities for these molecules have not been shown. [provided by RefSeq]

Other Designations

betagranin (N-terminal fragment of chromogranin A)|chromogranin A|parathyroid secretory protein 1

Disease

- [Genetic Predisposition to Disease](#)
- [Glomerulonephritis](#)
- [Hypertension](#)
- [Kidney Failure](#)
- [Prostatic Neoplasms](#)
- [Schizophrenia](#)