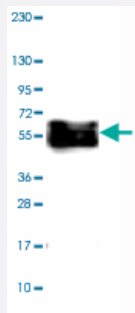


VIM monoclonal antibody, clone CL0157

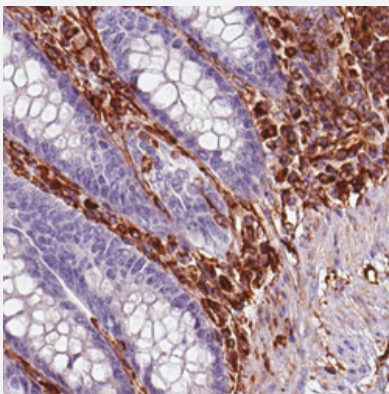
Catalog # MAB15543 Size 100 uL

Applications



Western Blot (Tissue lysate)

Western Blot analysis of human tonsil tissue lysate with VIM monoclonal antibody, clone CL0157 (Cat # MAB15543).



Immunohistochemistry (Formalin/PFA-fixed paraffin-embedded sections)

Immunohistochemical staining (Formalin-fixed paraffin-embedded sections) of human rectum with VIM monoclonal antibody, clone CL0157 (Cat # MAB15543) shows strong positivity in mesenchymal and lymphoid cells.

Specification

Product Description	Mouse monoclonal antibody raised against partial recombinant human VIM.
Immunogen	Recombinant protein corresponding to human VIM.
Sequence	FANYDKVRFLEQQNKILLAELEQLKGQGSRLGDLYEEEMRELRRQVDQLTNDKARVEVERDNL AEDIMRLREKLQEEMLQREEAENTLQSFRQVDNASLARLDLERKVES
Host	Mouse
Reactivity	Human

Form	Liquid
Purification	Protein A purification
Isotype	IgG1
Recommend Usage	Immunohistochemistry (Formalin/PFA-fixed paraffin-embedded sections) (1:2500-1:5000) Western Blot (1:500-1:1000) The optimal working dilution should be determined by the end user.
Storage Buffer	In PBS, pH 7.2 (40% glycerol, 0.02% sodium azide).
Storage Instruction	Store at 4°C. For long term storage store at -20°C. Aliquot to avoid repeated freezing and thawing.
Note	This product contains sodium azide: a POISONOUS AND HAZARDOUS SUBSTANCE which should be handled by trained staff only.

Applications

- Western Blot (Tissue lysate)

Western Blot analysis of human tonsil tissue lysate with VIM monoclonal antibody, clone CL0157 (Cat # MAB15543).

- Immunohistochemistry (Formalin/PFA-fixed paraffin-embedded sections)

Immunohistochemical staining (Formalin-fixed paraffin-embedded sections) of human rectum with VIM monoclonal antibody, clone CL0157 (Cat # MAB15543) shows strong positivity in mesenchymal and lymphoid cells.

Gene Info — VIM

Entrez GeneID	7431
Protein Accession#	P08670
Gene Name	VIM
Gene Alias	FLJ36605
Gene Description	vimentin
Omim ID	193060
Gene Ontology	Hyperlink

Gene Summary

This gene encodes a member of the intermediate filament family. Intermediate filaments, along with microtubules and actin microfilaments, make up the cytoskeleton. The protein encoded by this gene is responsible for maintaining cell shape, integrity of the cytoplasm, and stabilizing cytoskeletal interactions. It is also involved in the immune response, and controls the transport of low-density lipoprotein (LDL)-derived cholesterol from a lysosome to the site of esterification. It functions as an organizer of a number of critical proteins involved in attachment, migration, and cell signaling. Mutations in this gene causes a dominant, pulverulent cataract

Other Designations

OTTHUMP00000019224

Disease

- [Alzheimer disease](#)
- [Anorexia Nervosa](#)
- [Bulimia](#)
- [Cognition](#)
- [Genetic Predisposition to Disease](#)