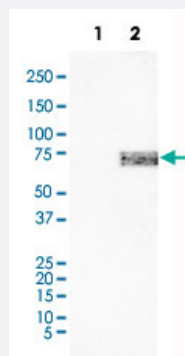


SOX11 monoclonal antibody, clone CL0143

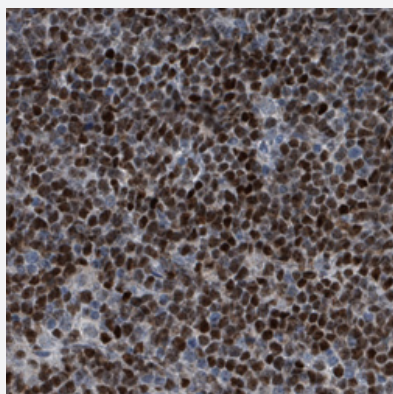
Catalog # MAB15541 Size 100 uL

Applications



Western Blot (Transfected lysate)

Western Blot analysis of Lane 1: negative control (vector only transfected HEK293T cell lysate) and Lane 2: over-expression lysate (co-expressed with a C-terminal myc-DDK tag in mammalian HEK293T cells) with SOX11 monoclonal antibody, clone CL0143 (Cat # MAB15541).



Immunohistochemistry (Formalin/PFA-fixed paraffin-embedded sections)

Immunohistochemical staining (Formalin-fixed paraffin-embedded sections) of human mantle cell lymphoma with SOX11 monoclonal antibody, clone CL0143 (Cat # MAB15541) shows strong nuclear positivity in a majority of tumor cells.

Specification

Product Description	Mouse monoclonal antibody raised against partial recombinant human SOX11.
Immunogen	Recombinant protein corresponding to human SOX11.
Epitope	This antibody binds to an epitope located within the peptide sequence IPFIREAERL as determined by overlapping synthetic peptides.
Sequence	FMVWSKIERRKIMEQSPDMHNAEISKRLGKRWKMLKDSEKIPFIREAERLRLKHMADYPDYKYRP RKKPKMDPSAKPSASQSPEKSAAGGGGGSAGGGAGGAKTSKGSSKK
Host	Mouse

Reactivity	Human
Form	Liquid
Purification	Protein A purification
Isotype	IgG2a
Recommend Usage	Immunohistochemistry (Formalin/PFA-fixed paraffin-embedded sections) (1:200-1:500) Western Blot (1:500-1:1000) The optimal working dilution should be determined by the end user.
Storage Buffer	In PBS, pH 7.2 (40% glycerol, 0.02% sodium azide).
Storage Instruction	Store at 4°C. For long term storage store at -20°C. Aliquot to avoid repeated freezing and thawing.
Note	This product contains sodium azide: a POISONOUS AND HAZARDOUS SUBSTANCE which should be handled by trained staff only.

Applications

- Western Blot (Transfected lysate)

Western Blot analysis of Lane 1: negative control (vector only transfected HEK293T cell lysate) and Lane 2: over-expression lysate (co-expressed with a C-terminal myc-DDK tag in mammalian HEK293T cells) with SOX11 monoclonal antibody, clone CL0143 (Cat # MAB15541).

- Immunohistochemistry (Formalin/PFA-fixed paraffin-embedded sections)

Immunohistochemical staining (Formalin-fixed paraffin-embedded sections) of human mantle cell lymphoma with SOX11 monoclonal antibody, clone CL0143 (Cat # MAB15541) shows strong nuclear positivity in a majority of tumor cells.

Gene Info — SOX11

Entrez GeneID	6664
Protein Accession#	P35716
Gene Name	SOX11
Gene Alias	-
Gene Description	SRY (sex determining region Y)-box 11
Omim ID	600898
Gene Ontology	Hyperlink

Gene Summary

This intronless gene encodes a member of the SOX (SRY-related HMG-box) family of transcription factors involved in the regulation of embryonic development and in the determination of the cell fate. The encoded protein may act as a transcriptional regulator after forming a protein complex with other proteins. The protein may function in the developing nervous system and play a role in tumorigenesis. [provided by RefSeq]

Other Designations

OTTHUMP00000115385|SRY (sex-determining region Y)-box 11|SRY-box 11|SRY-related HMG-box gene 11|transcription factor SOX-11

Publication Reference

- [Plasma cell and terminal B-cell differentiation in mantle cell lymphoma mainly occur in the SOX11-negative subtype.](#)

Ribera-Cortada I, Martinez D, Amador V, Royo C, Navarro A, Beà S, Gine E, de Leval L, Serrano S, Wotherspoon A, Colomer D, Martinez A, Campo E.

Modern Pathology 2015 Nov; 28(11):1435.

Application: IHC-P, Human, Human mantle cell lymphomas

- [Assessment of SOX11 expression in routine lymphoma tissue sections: characterization of new monoclonal antibodies for diagnosis of mantle cell lymphoma.](#)

Soldini D, Valera A, Solé C, Palomero J, Amador V, Martin-Subero JI, Ribera-Cortada I, Royo C, Salaverria I, Beà S, Gonzalvo E, Johannesson H, Herrera M, Colomo L, Martinez A, Campo E.

The American Journal of Surgical Pathology 2014 Jan; 38(1):86.

Application: IHC, WB-Tr, Human, HEK 293 cells, Human lymphoid tumors