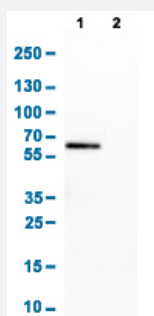


# OCLN monoclonal antibody, clone CL1555

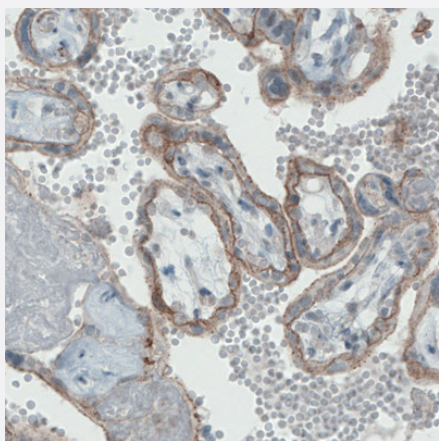
Catalog # MAB15534      Size 100 uL

## Applications



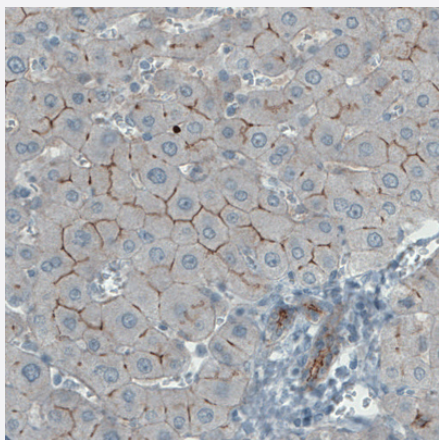
### Western Blot (Cell lysate)

Western Blot analysis of Lane 1: CACO-2 and Lane 2: U-87 cell lysates with OCLN monoclonal antibody, clone CL1555 (Cat # MAB15534).



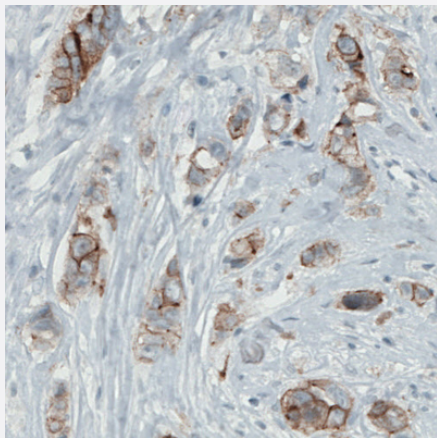
### Immunohistochemistry (Formalin/PFA-fixed paraffin-embedded sections)

Immunohistochemical staining (Formalin-fixed paraffin-embedded sections) of human placenta with OCLN monoclonal antibody, clone CL1555 (Cat # MAB15534) shows membranous immunoreactivity in the trophoblast.



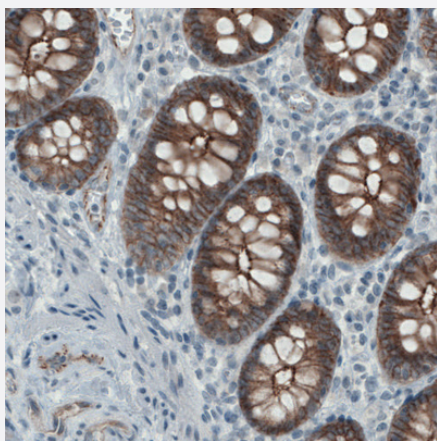
### Immunohistochemistry (Formalin/PFA-fixed paraffin-embedded sections)

Immunohistochemical staining (Formalin-fixed paraffin-embedded sections) of human liver with OCLN monoclonal antibody, clone CL1555 (Cat # MAB15534) shows membranous immunoreactivity in hepatocytes.



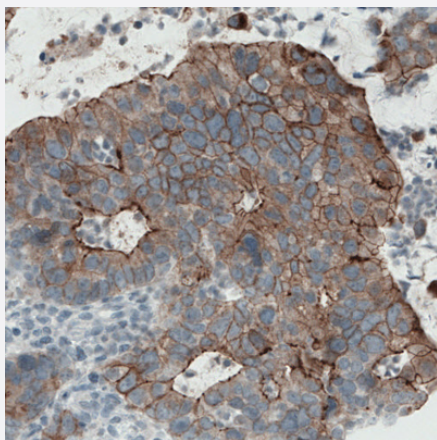
### Immunohistochemistry (Formalin/PFA-fixed paraffin-embedded sections)

Immunohistochemical staining (Formalin-fixed paraffin-embedded sections) of human breast cancer with OCLN monoclonal antibody, clone CL1555 (Cat # MAB15534) shows membranous immunoreactivity in tumor cells.



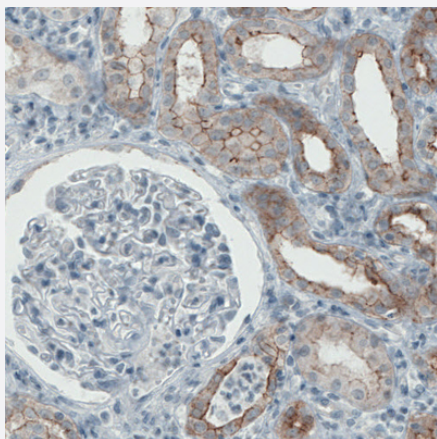
### Immunohistochemistry (Formalin/PFA-fixed paraffin-embedded sections)

Immunohistochemical staining (Formalin-fixed paraffin-embedded sections) of human colon with OCLN monoclonal antibody, clone CL1555 (Cat # MAB15534) shows strong membranous immunoreactivity in glandular cells.



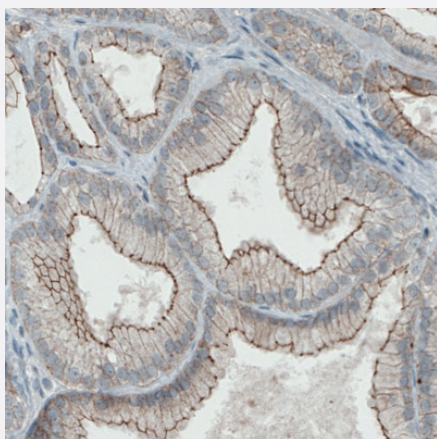
### Immunohistochemistry (Formalin/PFA-fixed paraffin-embedded sections)

Immunohistochemical staining (Formalin-fixed paraffin-embedded sections) of human stomach cancer with OCLN monoclonal antibody, clone CL1555 (Cat # MAB15534) shows strong membranous positivity in tumor cells.



### Immunohistochemistry (Formalin/PFA-fixed paraffin-embedded sections)

Immunohistochemical staining (Formalin-fixed paraffin-embedded sections) of human kidney with OCLN monoclonal antibody, clone CL1555 (Cat # MAB15534) shows membranous positivity in renal tubules.



## Immunohistochemistry (Formalin/PFA-fixed paraffin-embedded sections)

Immunohistochemical staining (Formalin-fixed paraffin-embedded sections) of human prostate cancer with OCLN monoclonal antibody, clone CL1555 (Cat # MAB15534) shows membranous positivity in tumor cells.

## Specification

<b>Product Description</b>	Mouse monoclonal antibody raised against partial recombinant human OCLN.
<b>Immunogen</b>	Recombinant protein corresponding to amino acids 282-415 of human OCLN.
<b>Sequence</b>	DKEHYDEQPPNVEEWVKNVSAGTQDVPSPPSDYVERVDSPMAYSSNGKVNDKRFYPESYKS TPVPEVVQELPLTSPVDDFRQPRYSSGGNFETPSKRAPAKGRAGRSKRTEQDHYETDYTTGGES CDELEED
<b>Host</b>	Mouse
<b>Reactivity</b>	Human
<b>Form</b>	Liquid
<b>Purification</b>	Protein A purification
<b>Isotype</b>	IgG2a
<b>Recommend Usage</b>	Immunohistochemistry (Formalin/PFA-fixed paraffin-embedded sections) (1:500 - 1:1000) Western Blot (1:500 - 1:1000) The optimal working dilution should be determined by the end user.
<b>Storage Buffer</b>	In PBS, pH 7.2 (40% glycerol, 0.02% sodium azide).
<b>Storage Instruction</b>	Store at 4°C for short term storage. For long term storage store at -20°C. Aliquot to avoid repeated freezing and thawing.
<b>Note</b>	This product contains sodium azide: a POISONOUS AND HAZARDOUS SUBSTANCE which should be handled by trained staff only.

## Applications

- Western Blot (Cell lysate)

Western Blot analysis of Lane 1: CACO-2 and Lane 2: U-87 cell lysates with OCLN monoclonal antibody, clone CL1555 (Cat # MAB15534).

- Immunohistochemistry (Formalin/PFA-fixed paraffin-embedded sections)

Immunohistochemical staining (Formalin-fixed paraffin-embedded sections) of human placenta with OCLN monoclonal antibody, clone CL1555 (Cat # MAB15534) shows membranous immunoreactivity in the trophoblast.

- Immunohistochemistry (Formalin/PFA-fixed paraffin-embedded sections)

Immunohistochemical staining (Formalin-fixed paraffin-embedded sections) of human liver with OCLN monoclonal antibody, clone CL1555 (Cat # MAB15534) shows membranous immunoreactivity in hepatocytes.

- Immunohistochemistry (Formalin/PFA-fixed paraffin-embedded sections)

Immunohistochemical staining (Formalin-fixed paraffin-embedded sections) of human breast cancer with OCLN monoclonal antibody, clone CL1555 (Cat # MAB15534) shows membranous immunoreactivity in tumor cells.

- Immunohistochemistry (Formalin/PFA-fixed paraffin-embedded sections)

Immunohistochemical staining (Formalin-fixed paraffin-embedded sections) of human colon with OCLN monoclonal antibody, clone CL1555 (Cat # MAB15534) shows strong membranous immunoreactivity in glandular cells.

- Immunohistochemistry (Formalin/PFA-fixed paraffin-embedded sections)

Immunohistochemical staining (Formalin-fixed paraffin-embedded sections) of human stomach cancer with OCLN monoclonal antibody, clone CL1555 (Cat # MAB15534) shows strong membranous positivity in tumor cells.

- Immunohistochemistry (Formalin/PFA-fixed paraffin-embedded sections)

Immunohistochemical staining (Formalin-fixed paraffin-embedded sections) of human kidney with OCLN monoclonal antibody, clone CL1555 (Cat # MAB15534) shows membranous positivity in renal tubules.

- Immunohistochemistry (Formalin/PFA-fixed paraffin-embedded sections)

Immunohistochemical staining (Formalin-fixed paraffin-embedded sections) of human prostate cancer with OCLN monoclonal antibody, clone CL1555 (Cat # MAB15534) shows membranous positivity in tumor cells.

## Gene Info — OCLN

Entrez GeneID [100506658](#)

Protein Accession# [Q16625](#)

Gene Name	OCLN
Gene Alias	BLCPMG, PPP1R115, PTORCH1
Gene Description	occludin
Gene Ontology	<a href="#">Hyperlink</a>
Gene Summary	regulatory subunit 115 tight junction protein occludin
Other Designations	occludin phosphatase 1, regulatory subunit 115 tight junction protein occludin