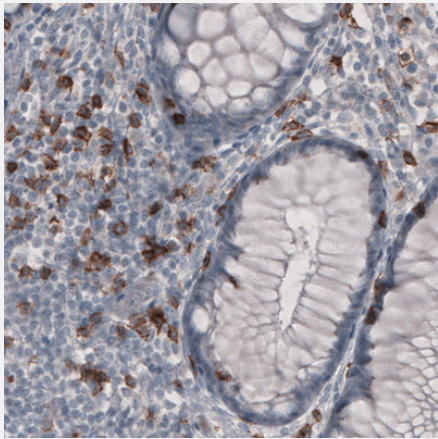


# CD8A monoclonal antibody, clone CL1529

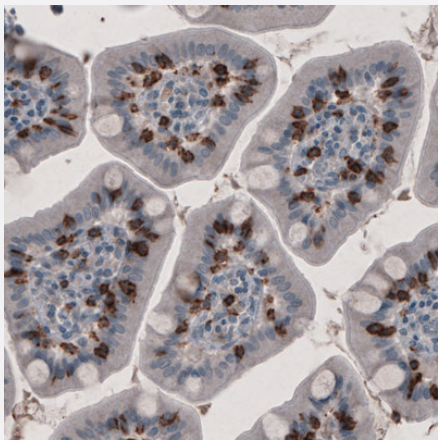
Catalog # MAB15532      Size 100 uL

## Applications



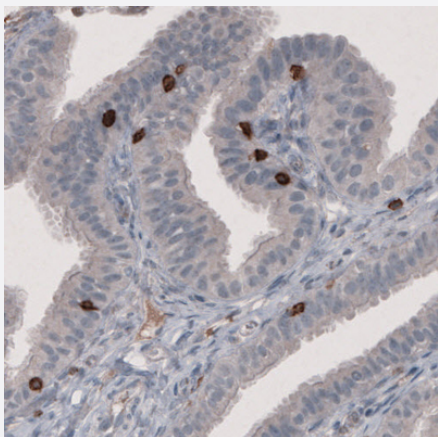
### Immunohistochemistry (Formalin/PFA-fixed paraffin-embedded sections)

Immunohistochemical staining (Formalin-fixed paraffin-embedded sections) of human rectum with CD8A monoclonal antibody, clone CL1529 (Cat # MAB15532) shows strong positivity in a subset of lymphoid cells in lamina propria.



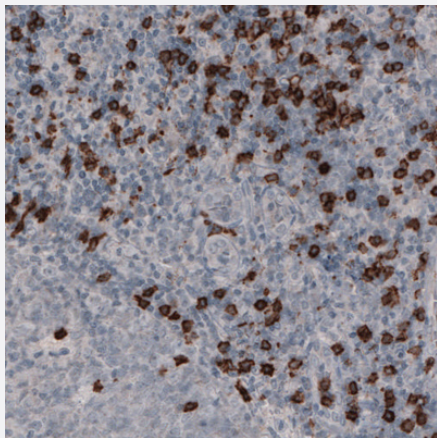
### Immunohistochemistry (Formalin/PFA-fixed paraffin-embedded sections)

Immunohistochemical staining (Formalin-fixed paraffin-embedded sections) of human small intestine with CD8A monoclonal antibody, clone CL1529 (Cat # MAB15532) shows strong immunoreactivity in a subset of lymphoid cells in lamina propria.



### Immunohistochemistry (Formalin/PFA-fixed paraffin-embedded sections)

Immunohistochemical staining (Formalin-fixed paraffin-embedded sections) of human fallopian tube with CD8A monoclonal antibody, clone CL1529 (Cat # MAB15532) shows strong positivity in a subset of lymphoid cells.



## Immunohistochemistry (Formalin/PFA-fixed paraffin-embedded sections)

Immunohistochemical staining (Formalin-fixed paraffin-embedded sections) of human tonsil with CD8A monoclonal antibody, clone CL1529 (Cat # MAB15532) shows strong immunoreactivity in a subset of lymphoid cells outside the reaction centra.

## Specification

<b>Product Description</b>	Mouse monoclonal antibody raised against partial recombinant human CD8A.
<b>Immunogen</b>	Recombinant protein corresponding to amino acids 64-147 of human CD8A.
<b>Sequence</b>	AASPTFLLYLSQNKPKAAEGLDTQRFSGKRLGDTFVLTLSDFRRENEGYYFCSALSNSIMYFSHFV PVFLPAKPTTTPAPRPPT
<b>Host</b>	Mouse
<b>Reactivity</b>	Human
<b>Form</b>	Liquid
<b>Purification</b>	Protein A purification
<b>Isotype</b>	IgG1
<b>Recommend Usage</b>	Immunohistochemistry (Formalin/PFA-fixed paraffin-embedded sections) (1:200 - 1:500) The optimal working dilution should be determined by the end user.
<b>Storage Buffer</b>	In PBS, pH 7.2 (40% glycerol, 0.02% sodium azide).
<b>Storage Instruction</b>	Store at 4°C for short term storage. For long term storage store at -20°C. Aliquot to avoid repeated freezing and thawing.
<b>Note</b>	This product contains sodium azide: a POISONOUS AND HAZARDOUS SUBSTANCE which should be handled by trained staff only.

## Applications

- Immunohistochemistry (Formalin/PFA-fixed paraffin-embedded sections)

Immunohistochemical staining (Formalin-fixed paraffin-embedded sections) of human rectum with CD8A monoclonal antibody, clone CL1529 (Cat # MAB15532) shows strong positivity in a subset of lymphoid cells in lamina propria.

- Immunohistochemistry (Formalin/PFA-fixed paraffin-embedded sections)

Immunohistochemical staining (Formalin-fixed paraffin-embedded sections) of human small intestine with CD8A monoclonal antibody, clone CL1529 (Cat # MAB15532) shows strong immunoreactivity in a subset of lymphoid cells in lamina propria.

- Immunohistochemistry (Formalin/PFA-fixed paraffin-embedded sections)

Immunohistochemical staining (Formalin-fixed paraffin-embedded sections) of human fallopian tube with CD8A monoclonal antibody, clone CL1529 (Cat # MAB15532) shows strong positivity in a subset of lymphoid cells.

- Immunohistochemistry (Formalin/PFA-fixed paraffin-embedded sections)

Immunohistochemical staining (Formalin-fixed paraffin-embedded sections) of human tonsil with CD8A monoclonal antibody, clone CL1529 (Cat # MAB15532) shows strong immunoreactivity in a subset of lymphoid cells outside the reaction centra.

## Gene Info — CD8A

Entrez GeneID [925](#)

Protein Accession# [P01732](#)

Gene Name CD8A

Gene Alias CD8, Leu2, MAL, p32

Gene Description CD8a molecule

Omim ID [186910 608957](#)

Gene Ontology [Hyperlink](#)

**Gene Summary**

The CD8 antigen is a cell surface glycoprotein found on most cytotoxic T lymphocytes that mediates efficient cell-cell interactions within the immune system. The CD8 antigen acts as a coreceptor with the T-cell receptor on the T lymphocyte to recognize antigens displayed by an antigen presenting cell (APC) in the context of class I MHC molecules. The coreceptor functions as either a homodimer composed of two alpha chains, or as a heterodimer composed of one alpha and one beta chain. Both alpha and beta chains share significant homology to immunoglobulin variable light chains. This gene encodes the CD8 alpha chain isoforms. Multiple transcript variants encoding different isoforms have been found for this gene. [provided by RefSeq]

**Other Designations**

CD8 antigen alpha polypeptide|CD8 antigen, alpha polypeptide (p32)|Leu2 T-lymphocyte antigen|OKT8 T-cell antigen|T cell co-receptor|T-cell antigen Leu2|T-cell surface glycoprotein CD8 alpha chain|T-lymphocyte differentiation antigen T8/Leu-2|T8 T-cell ant

## Pathway

- [Antigen processing and presentation](#)
- [Cell adhesion molecules \(CAMs\)](#)
- [Hematopoietic cell lineage](#)
- [Primary immunodeficiency](#)
- [T cell receptor signaling pathway](#)