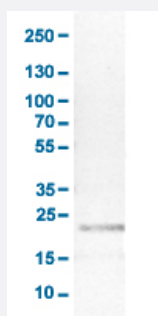


CD3E monoclonal antibody, clone CL1466

Catalog # MAB15530

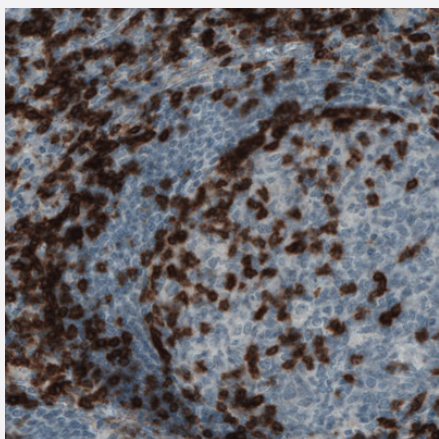
Size 100 uL

Applications



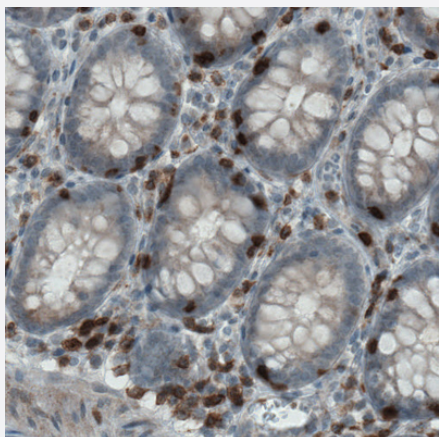
Western Blot (Tissue lysate)

Western Blot analysis of human tonsil tissue lysate with CD3E monoclonal antibody, clone CL1466 (Cat # MAB15530).



Immunohistochemistry (Formalin/PFA-fixed paraffin-embedded sections)

Immunohistochemical staining (Formalin-fixed paraffin-embedded sections) of human tonsil with CD3E monoclonal antibody, clone CL1466 (Cat # MAB15530) shows strong positivity in a subset of lymphoid cells.



Immunohistochemistry (Formalin/PFA-fixed paraffin-embedded sections)

Immunohistochemical staining (Formalin-fixed paraffin-embedded sections) of human colon with CD3E monoclonal antibody, clone CL1466 (Cat # MAB15530) shows strong immunoreactivity in a subset of lymphoid cells.

Specification

Product Description	Mouse monoclonal antibody raised against partial recombinant human CD3E.
Immunogen	Recombinant protein corresponding to amino acids 25-126 of human CD3E.
Sequence	NEEMGGITQTPYKVSISGTTVILTCPQYPGSEILWQHNDKNIGGDEDDKNIGSDEDHLSELE QSGYYVCYPRGSKPEDANFYLYLRARVCENCMEMD
Host	Mouse
Reactivity	Human
Form	Liquid
Purification	Protein A purification
Isotype	IgG1
Recommend Usage	Immunohistochemistry (Formalin/PFA-fixed paraffin-embedded sections) (1:1000 - 1:2500) Western Blot (1:500 - 1:1000) The optimal working dilution should be determined by the end user.
Storage Buffer	In PBS, pH 7.2 (40% glycerol, 0.02% sodium azide).
Storage Instruction	Store at 4°C for short term storage. For long term storage store at -20°C. Aliquot to avoid repeated freezing and thawing.
Note	This product contains sodium azide: a POISONOUS AND HAZARDOUS SUBSTANCE which should be handled by trained staff only.

Applications

- Western Blot (Tissue lysate)

Western Blot analysis of human tonsil tissue lysate with CD3E monoclonal antibody, clone CL1466 (Cat # MAB15530).

- Immunohistochemistry (Formalin/PFA-fixed paraffin-embedded sections)

Immunohistochemical staining (Formalin-fixed paraffin-embedded sections) of human tonsil with CD3E monoclonal antibody, clone CL1466 (Cat # MAB15530) shows strong positivity in a subset of lymphoid cells.

- Immunohistochemistry (Formalin/PFA-fixed paraffin-embedded sections)

Immunohistochemical staining (Formalin-fixed paraffin-embedded sections) of human colon with CD3E monoclonal antibody, clone CL1466 (Cat # MAB15530) shows strong immunoreactivity in a subset of lymphoid cells.

Gene Info — CD3E

Entrez GeneID [916](#)

Protein Accession# [P07766](#)

Gene Name CD3E

Gene Alias FLJ18683, T3E, TCRE

Gene Description CD3e molecule, epsilon (CD3-TCR complex)

Omim ID [186830](#)

Gene Ontology [Hyperlink](#)

Gene Summary The protein encoded by this gene is the CD3-epsilon polypeptide, which together with CD3-gamma, -delta and -zeta, and the T-cell receptor alpha/beta and gamma/delta heterodimers, forms the T-cell receptor-CD3 complex. This complex plays an important role in coupling antigen recognition to several intracellular signal-transduction pathways. The genes encoding the epsilon, gamma and delta polypeptides are located in the same cluster on chromosome 11. The epsilon polypeptide plays an essential role in T-cell development. Defects in this gene cause immunodeficiency. This gene has also been linked to a susceptibility to type I diabetes in women. [provided by RefSeq]

Other Designations CD3-epsilon|CD3E antigen, epsilon polypeptide|CD3e antigen, epsilon polypeptide (TiT3 complex)|T-cell antigen receptor complex, epsilon subunit of T3|T-cell surface antigen T3/Leu-4 epsilon chain|T-cell surface glycoprotein CD3 epsilon chain

Pathway

- [Hematopoietic cell lineage](#)
- [Primary immunodeficiency](#)
- [T cell receptor signaling pathway](#)

Disease

- [Asthma](#)
- [Cardiovascular Diseases](#)
- [Celiac Disease](#)
- [Depressive Disorder](#)
- [Diabetes Mellitus](#)

- [Edema](#)
- [Genetic Predisposition to Disease](#)
- [Inflammation](#)