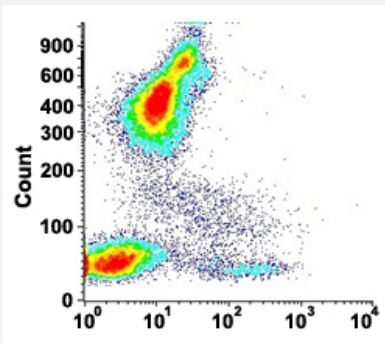


# HLA-DR monoclonal antibody, clone GRB-1 (PerCP)

Catalog # MAB15425      Size 100 Reactions

## Applications



### Flow Cytometry

Flow cytometric analysis of human peripheral blood lymphocytes with HLA-DR monoclonal antibody, clone GRB-1 (PerCP) (Cat # MAB15425).

## Specification

Product Description	Mouse monoclonal antibody raised against native human HLA-DR.
Immunogen	Mononuclear cell leukemia acute undifferentiated.
Host	Mouse
Theoretical MW (kDa)	36
Reactivity	Human
Form	Liquid
Conjugation	PerCP
Purification	Affinity purification
Isotype	IgG2a
Recommend Usage	Flow Cytometry (20 $\mu$ L/ $10^6$ cells) The optimal working dilution should be determined by the end user.
Storage Buffer	In PBS, pH 7.4 (protein stabilizer, 0.09% sodium azide).

**Storage Instruction**

Store in the dark at 4°C. Avoid prolonged exposure to light.

**Note**

This product contains sodium azide: a POISONOUS AND HAZARDOUS SUBSTANCE which should be handled by trained staff only.

## Applications

- Flow Cytometry

Flow cytometric analysis of human peripheral blood lymphocytes with HLA-DR monoclonal antibody, clone GRB-1 (PerCP) (Cat # MAB15425).