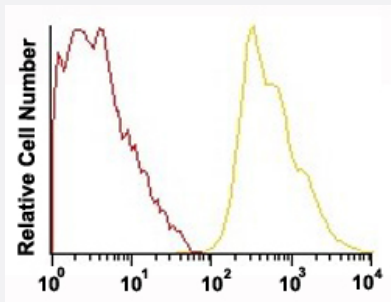


GYPA monoclonal antibody, clone HI264 (FITC)

Catalog # MAB15408

Size 5 x 100 reactions

Applications



Flow Cytometry

Flow cytometric analysis of human erythroid cells and their progenitors with GYPA monoclonal antibody, clone HI264 (FITC) (Cat # MAB15408).

Specification

Product Description Mouse monoclonal antibody raised against synthetic peptide of human GYPA.

Immunogen A synthetic peptide corresponding to N-terminus of human GYPA.

Host Mouse

Theoretical MW (kDa) 43

Reactivity Human

Form Liquid

Conjugation FITC

Purification Affinity purification

Isotype IgG2a

Recommend Usage Flow Cytometry (20 μ L/ 10^6 cells)
The optimal working dilution should be determined by the end user.

Storage Buffer In PBS, pH 7.4 (protein stabilizer, 0.09% sodium azide).

Storage Instruction

Store in the dark at 4°C. Avoid prolonged exposure to light.

Note

This product contains sodium azide: a POISONOUS AND HAZARDOUS SUBSTANCE which should be handled by trained staff only.

Applications

- Flow Cytometry

Flow cytometric analysis of human erythroid cells and their progenitors with GYPA monoclonal antibody, clone HI264 (FITC) (Cat # MAB15408).

Gene Info — GYPA

Entrez GeneID
[2993](#)
Protein Accession#
[P02724](#)
Gene Name

GYPA

Gene Alias

CD235a, GPA, GPERik, GPSAT, GpMiIII, HGpMiIII, HGpMiV, HGpMiX, HGpMiXI, HGpSta(C), MN, MNS

Gene Description

glycophorin A (MNS blood group)

Omim ID
[111300 611162](#)
Gene Ontology
[Hyperlink](#)
Gene Summary

Glycophorins A (GYPA) and B (GYPB) are major sialoglycoproteins of the human erythrocyte membrane which bear the antigenic determinants for the MN and Ss blood groups. In addition to the M or N and S or s antigens that commonly occur in all populations, about 40 related variant phenotypes have been identified. These variants include all the variants of the Miltenberger complex and several isoforms of Sta, as well as Dantu, Sat, He, Mg, and deletion variants Ena, S-s-U- and Mk. Most of the variants are the result of gene recombinations between GYPA and GYPB. [provided by RefSeq]

Other Designations

Mi.V glycoprotein (24 AA)|erythroid-lineage-specific membrane sialoglycoprotein|glycophorin A|glycophorin A (MN blood group)|glycophorin A MNS blood group|glycophorin A, GPA|glycophorin Erik|glycophorin Mil|glycophorin MilIII|glycophorin MiV|glycophorin Mi

Pathway

- [Hematopoietic cell lineage](#)

Disease

- [Asthma](#)
- [Crohn Disease](#)
- [Genetic Predisposition to Disease](#)
- [Malaria](#)