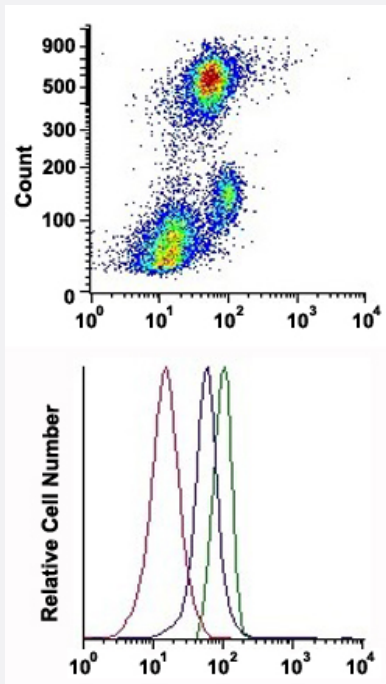


BSG monoclonal antibody, clone VJ1/9 (CF-Blue)

Catalog # MAB15405 Size 100 Reactions

Applications



Flow Cytometry

Flow cytometric analysis of human leukocytes, erythrocytes, platelets, and endothelial cells with BSG monoclonal antibody, clone VJ1/9 (CF-Blue) (Cat # MAB15405).

Specification

Product Description	Mouse monoclonal antibody raised against native human BSG.
Immunogen	Activated human umbilical vein endothelial cells (HUVECs).
Host	Mouse
Theoretical MW (kDa)	50-65
Reactivity	Human
Form	Liquid
Conjugation	CF-Blue

Purification	Affinity purification
Isotype	IgG1
Recommend Usage	Flow Cytometry (20 μ L/ 10^6 cells) The optimal working dilution should be determined by the end user.
Storage Buffer	In PBS, pH 7.4 (protein stabilizer, 0.09% sodium azide).
Storage Instruction	Store in the dark at 4°C. Avoid prolonged exposure to light.
Note	This product contains sodium azide: a POISONOUS AND HAZARDOUS SUBSTANCE which should be handled by trained staff only.

Applications

- Flow Cytometry

Flow cytometric analysis of human leukocytes, erythrocytes, platelets, and endothelial cells with BSG monoclonal antibody, clone VJ1/9 (CF-Blue) (Cat # MAB15405).

Gene Info — BSG

Entrez GeneID	682
Protein Accession#	P35613
Gene Name	BSG
Gene Alias	5F7, CD147, EMMPRIN, M6, OK, TCSF
Gene Description	basigin (Ok blood group)
Omim ID	109480 111380
Gene Ontology	Hyperlink
Gene Summary	The protein encoded by this gene is a plasma membrane protein that is important in spermatogenesis, embryo implantation, neural network formation, and tumor progression. The encoded protein is also a member of the immunoglobulin superfamily. Multiple transcript variants encoding different isoforms have been found for this gene. [provided by RefSeq]
Other Designations	CD147 antigen M6 leukocyte activation antigen OK blood group antigen basigin collagenase stimulatory factor extracellular matrix metalloproteinase inducer

Disease

- [Cardiovascular Diseases](#)
- [Diabetes Mellitus](#)
- [Edema](#)