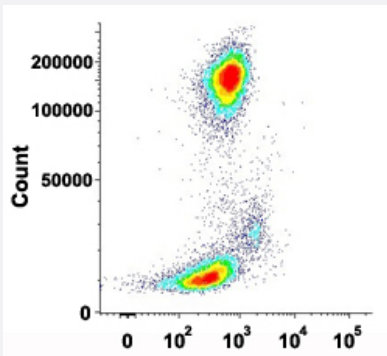


BSG monoclonal antibody, clone VJ1/9 (FITC)

Catalog # MAB15402 Size 5 x 100 reactions

Applications



Flow Cytometry

Flow cytometric analysis of human peripheral blood lymphocytes with BSG monoclonal antibody, clone VJ1/9 (FITC) (Cat # MAB15402).

Specification

Product Description	Mouse monoclonal antibody raised against native human BSG.
Immunogen	Activated human umbilical vein endothelial cells (HUVECs).
Host	Mouse
Theoretical MW (kDa)	50-65
Reactivity	Human
Form	Liquid
Conjugation	FITC
Purification	Affinity purification
Isotype	IgG1
Recommend Usage	Flow Cytometry (20 μ L/ 10^6 cells) The optimal working dilution should be determined by the end user.
Storage Buffer	In PBS, pH 7.4 (protein stabilizer, 0.09% sodium azide).

Storage Instruction

Store in the dark at 4°C. Avoid prolonged exposure to light.

Note

This product contains sodium azide: a POISONOUS AND HAZARDOUS SUBSTANCE which should be handled by trained staff only.

Applications

- Flow Cytometry

Flow cytometric analysis of human peripheral blood lymphocytes with BSG monoclonal antibody, clone VJ1/9 (FITC) (Cat # MAB15402).

Gene Info — BSG

Entrez GeneID[682](#)**Protein Accession#**[P35613](#)**Gene Name**

BSG

Gene Alias

5F7, CD147, EMMPRIN, M6, OK, TCSF

Gene Description

basigin (Ok blood group)

Omim ID[109480 111380](#)**Gene Ontology**[Hyperlink](#)**Gene Summary**

The protein encoded by this gene is a plasma membrane protein that is important in spermatogenesis, embryo implantation, neural network formation, and tumor progression. The encoded protein is also a member of the immunoglobulin superfamily. Multiple transcript variants encoding different isoforms have been found for this gene. [provided by RefSeq]

Other Designations

CD147 antigen|M6 leukocyte activation antigen|OK blood group antigen|basigin|collagenase stimulatory factor|extracellular matrix metalloproteinase inducer

Disease

- [Cardiovascular Diseases](#)
- [Diabetes Mellitus](#)
- [Edema](#)