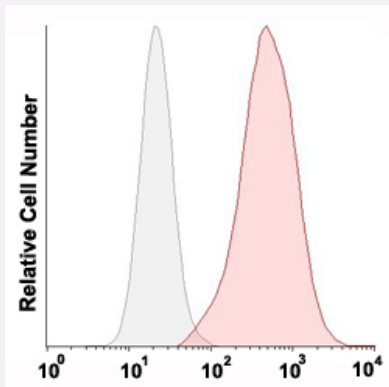


MCAM monoclonal antibody, clone TEA1/34 (APC)

Catalog # MAB15399 Size 5 x 100 reactions

Applications



Flow Cytometry

Flow cytometric analysis of HeLa cell line with MCAM monoclonal antibody, clone TEA1/34 (APC) (Cat # MAB15399).

Specification

Product Description	Mouse monoclonal antibody raised against native human MCAM.
Immunogen	Human umbilical vein endothelial cells (HUVECs).
Host	Mouse
Theoretical MW (kDa)	118
Reactivity	Human
Form	Liquid
Conjugation	APC
Purification	Affinity purification
Isotype	IgG2a
Recommend Usage	Flow Cytometry (20 μ L/ 10^6 cells) The optimal working dilution should be determined by the end user.

Storage Buffer	In PBS, pH 7.4 (protein stabilizer, 0.09% sodium azide).
Storage Instruction	Store in the dark at 4°C. Avoid prolonged exposure to light.
Note	This product contains sodium azide: a POISONOUS AND HAZARDOUS SUBSTANCE which should be handled by trained staff only.

Applications

- Flow Cytometry

Flow cytometric analysis of HeLa cell line with MCAM monoclonal antibody, clone TEA1/34 (APC) (Cat # MAB15399).

Gene Info — MCAM

Entrez GeneID	4162
Protein Accession#	P43121
Gene Name	MCAM
Gene Alias	CD146, MUC18
Gene Description	melanoma cell adhesion molecule
Omim ID	155735
Gene Ontology	Hyperlink
Other Designations	Gicerin melanoma adhesion molecule