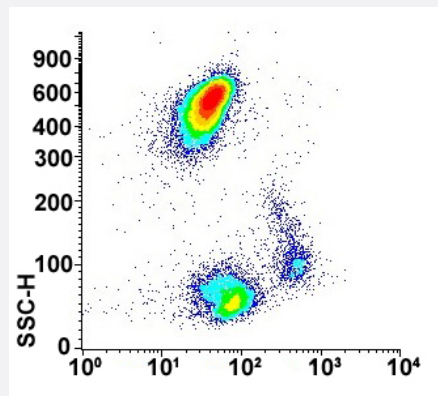


SLC3A2 monoclonal antibody, clone FG1/8 (PE)

Catalog # MAB15376 Size 5 x 100 reactions

Applications



Flow Cytometry

Flow cytometric analysis of human peripheral blood cells with SLC3A2 monoclonal antibody, clone FG1/8 (PE) (Cat # MAB15376).

Specification

Product Description	Mouse monoclonal antibody raised against human SLC3A2.
Immunogen	T cells from leukemic HPB-ALL.
Host	Mouse
Theoretical MW (kDa)	125
Reactivity	Human
Form	Liquid
Conjugation	PE
Purification	Affinity purification
Isotype	IgG1
Recommend Usage	Flow Cytometry (20 μ L/ 10^6 cells) The optimal working dilution should be determined by the end user.

Storage Buffer	In PBS, pH 7.4 (protein stabilizer, 0.09% sodium azide).
Storage Instruction	Store in the dark at 4°C.
Note	This product contains sodium azide: a POISONOUS AND HAZARDOUS SUBSTANCE which should be handled by trained staff only.

Applications

- Flow Cytometry

Flow cytometric analysis of human peripheral blood cells with SLC3A2 monoclonal antibody, clone FG1/8 (PE) (Cat # MAB15376).

Gene Info — SLC3A2

Entrez GeneID	6520
Protein Accession#	P08195
Gene Name	SLC3A2
Gene Alias	4F2, 4F2HC, 4T2HC, CD98, CD98HC, MDU1, NACAE
Gene Description	solute carrier family 3 (activators of dibasic and neutral amino acid transport), member 2
Omim ID	158070
Gene Ontology	Hyperlink

Gene Summary	This gene is a member of the solute carrier family and encodes a cell surface, transmembrane protein with an alpha amylase domain. The protein exists as the heavy chain of a heterodimer, covalently bound through di-sulfide bonds to one of several possible light chains. It associates with integrins and mediates integrin-dependent signaling related to normal cell growth and tumorigenesis. Alternate transcriptional splice variants, encoding different isoforms, have been characterized. [provided by RefSeq]
--------------	---

Other Designations	4F2 cell-surface antigen heavy chain 4F2 heavy chain CD98 heavy chain antigen defined by monoclonal antibody 4F2, heavy chain antigen identified by monoclonal antibodies 4F2, TRA1.10, TROP4, and T43 heavy chain lymphocyte activation antigen 4F2 large subu
--------------------	---

Disease

- [Cardiovascular Diseases](#)

- [Diabetes Mellitus](#)
- [Edema](#)
- [Lymphoma](#)
- [Multiple Myeloma](#)