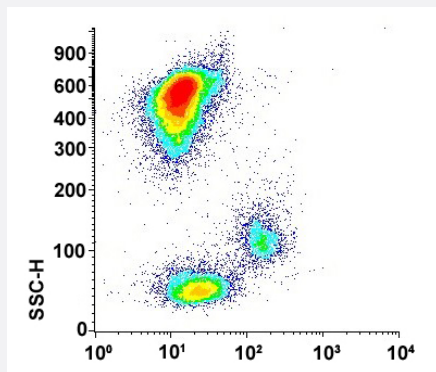


SLC3A2 monoclonal antibody, clone FG1/8 (FITC)

Catalog # MAB15375

Size 5 x 100 reactions

Applications



Flow Cytometry

Flow cytometric analysis of human peripheral blood cells with SLC3A2 monoclonal antibody, clone FG1/8 (FITC) (Cat # MAB15375).

Specification

Product Description	Mouse monoclonal antibody raised against human SLC3A2.
Immunogen	T cells from leukemic HPB-ALL.
Host	Mouse
Theoretical MW (kDa)	125
Reactivity	Human
Form	Liquid
Conjugation	FITC
Purification	Affinity purification
Isotype	IgG1
Recommend Usage	Flow Cytometry (20 μ L/ 10^6 cells) The optimal working dilution should be determined by the end user.
Storage Buffer	In PBS, pH 7.4 (protein stabilizer, 0.09% sodium azide).

Storage Instruction

Store in the dark at 4°C.

Note

This product contains sodium azide: a POISONOUS AND HAZARDOUS SUBSTANCE which should be handled by trained staff only.

Applications

- Flow Cytometry

Flow cytometric analysis of human peripheral blood cells with SLC3A2 monoclonal antibody, clone FG1/8 (FITC) (Cat # MAB15375).

Gene Info — SLC3A2

Entrez GeneID

[6520](#)

Protein Accession#

[P08195](#)

Gene Name

SLC3A2

Gene Alias

4F2, 4F2HC, 4T2HC, CD98, CD98HC, MDU1, NACAE

Gene Description

solute carrier family 3 (activators of dibasic and neutral amino acid transport), member 2

Omim ID

[158070](#)

Gene Ontology

[Hyperlink](#)

Gene Summary

This gene is a member of the solute carrier family and encodes a cell surface, transmembrane protein with an alpha amylase domain. The protein exists as the heavy chain of a heterodimer, covalently bound through di-sulfide bonds to one of several possible light chains. It associates with integrins and mediates integrin-dependent signaling related to normal cell growth and tumorigenesis. Alternate transcriptional splice variants, encoding different isoforms, have been characterized. [provided by RefSeq]

Other Designations

4F2 cell-surface antigen heavy chain|4F2 heavy chain|CD98 heavy chain|antigen defined by monoclonal antibody 4F2, heavy chain|antigen identified by monoclonal antibodies 4F2, TRA1.10, TROP4, and T43|heavy chain|lymphocyte activation antigen 4F2 large subu

Disease

- [Cardiovascular Diseases](#)

- [Diabetes Mellitus](#)

- [Edema](#)
- [Lymphoma](#)
- [Multiple Myeloma](#)