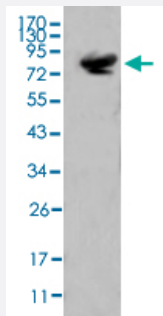


ISL1 monoclonal antibody, clone 1B1

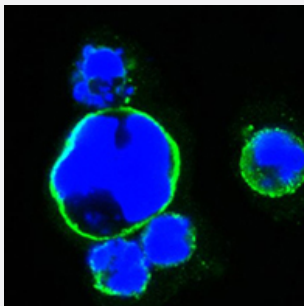
Catalog # MAB15271 Size 100 uL

Applications



Western Blot (Transfected lysate)

Western Blot analysis of using ISL1 monoclonal antibody, clone 1B1 against full-length Islet-1 (aa1-349)-hlgGfc transfected HEK293 cell lysate.



Immunofluorescence

Immunofluorescence staining of HEK293 cells trasfected with full-length Islet-1-hlgGfc using ISL1 monoclonal antibody, clone 1B1 (Green). Blue: DRAQ5 fluorescent DNA dye.

Specification

Product Description	Mouse monoclonal antibody raised against partial recombinant human ISL1.
Immunogen	Recombinant protein corresponding to human ISL1.
Host	Mouse
Reactivity	Human
Form	Liquid
Purification	Affinity purification

Recommend Usage	ELISA (1:10000) Immunofluorescence (1:200-1:1000) Western Blot (1:500-1:2000) The optimal working dilution should be determined by the end user.
Storage Buffer	In ascitic fluid (0.03% sodium azide).
Storage Instruction	Store at -20°C. Aliquot to avoid repeated freezing and thawing.
Note	This product contains sodium azide: a POISONOUS AND HAZARDOUS SUBSTANCE which should be handled by trained staff only.

Applications

- Western Blot (Transfected lysate)

Western Blot analysis of using ISL1 monoclonal antibody, clone 1B1 against full-length Islet-1 (aa1-349)-hlgGFc transfected HEK293 cell lysate.

- Immunofluorescence

Immunofluorescence staining of HEK293 cells transfected with full-length Islet-1-hlgGFc using ISL1 monoclonal antibody, clone 1B1 (Green). Blue: DRAQ5 fluorescent DNA dye.

- Enzyme-linked Immunoabsorbent Assay

Gene Info — ISL1

Entrez GeneID	3670
Protein Accession#	P61371
Gene Name	ISL1
Gene Alias	Isl-1
Gene Description	ISL LIM homeobox 1
Omim ID	600366
Gene Ontology	Hyperlink

Gene Summary

This gene encodes a member of the LIM/homeodomain family of transcription factors. The encoded protein binds to the enhancer region of the insulin gene, among others, and may play an important role in regulating insulin gene expression. The encoded protein is central to the development of pancreatic cell lineages and may also be required for motor neuron generation. Mutations in this gene have been associated with maturity-onset diabetes of the young. [provided by RefSeq]

Other Designations

ISL1 transcription factor, LIM/homeodomain|islet-1

Disease

- [Attention Deficit Disorder with Hyperactivity](#)
- [Diabetes Mellitus](#)
- [Genetic Predisposition to Disease](#)
- [Heart Defects](#)
- [Tourette Syndrome](#)