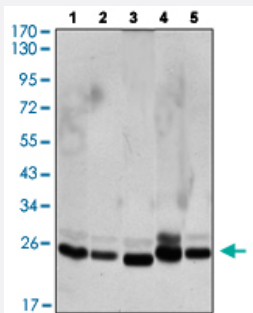


CBX1 monoclonal antibody, clone 5A3

Catalog # MAB15261 Size 100 uL

Applications

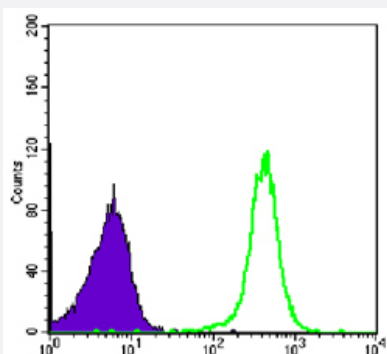
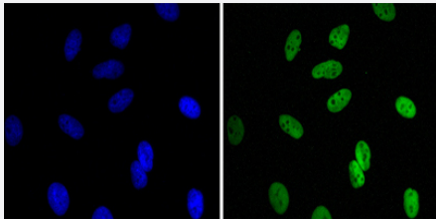


Western Blot (Cell lysate)

Western Blot analysis of Lane 1: HeLa, Lane 2: COS7, Lane 3: NIH/3T3, Lane 4: A431 and Lane5: C6 cell lysate.

Immunofluorescence

Immunofluorescence staining of HeLa cells using CBX1 monoclonal antibody, clone 5A3 (Green). Blue: DRAQ5 fluorescent DNA dye.



Flow Cytometry

Flow cytometric analysis of COS7 cells using CBX1 monoclonal antibody, clone 5A3 (Green) and negative control (Purple).

Specification

Product Description

Mouse monoclonal antibody raised against partial recombinant human CBX1.

Immunogen	Recombinant protein corresponding to human CBX1.
Host	Mouse
Reactivity	Human, Monkey, Mouse
Form	Liquid
Purification	Affinity purification
Recommend Usage	ELISA (1:10000) Flow Cytometry (1:200-1:400) Immunofluorescence (1:200-1:1000) Western Blot (1:500-1:2000) The optimal working dilution should be determined by the end user.
Storage Buffer	In ascitic fluid (0.03% sodium azide).
Storage Instruction	Store at -20°C. Aliquot to avoid repeated freezing and thawing.
Note	This product contains sodium azide: a POISONOUS AND HAZARDOUS SUBSTANCE which should be handled by trained staff only.

Applications

- Western Blot (Cell lysate)

Western Blot analysis of Lane 1: HeLa, Lane 2: COS7, Lane 3: NIH/3T3, Lane 4: A431 and Lane5: C6 cell lysate.

- Immunofluorescence

Immunofluorescence staining of HeLa cells using CBX1 monoclonal antibody, clone 5A3 (Green). Blue: DRAQ5 fluorescent DNA dye.

- Enzyme-linked Immunoabsorbent Assay

- Flow Cytometry

Flow cytometric analysis of COS7 cells using CBX1 monoclonal antibody, clone 5A3 (Green) and negative control (Purple).

Gene Info — CBX1

Entrez GeneID [10951](#)

Protein Accession# [P83916](#)

Gene Name	CBX1
Gene Alias	CBX, HP1-BETA, HP1Hs-beta, HP1Hsbeta, M31, MOD1, p25beta
Gene Description	chromobox homolog 1 (HP1 beta homolog Drosophila)
Omim ID	604511
Gene Ontology	Hyperlink
Gene Summary	<p>This gene encodes a highly conserved nonhistone protein, which is a member of the heterochromatin protein family . The protein is enriched in the heterochromatin and associated with centromeres. The protein has a single N-terminal chromodomain which can bind to histone proteins via methylated lysine residues, and a C-terminal chromo shadow-domain (CSD) which is responsible for the homodimerization and interaction with a number of chromatin-associated nonhistone proteins. The protein may play an important role in the epigenetic control of chromatin structure and gene expression. Several related pseudogenes are located on chromosomes 1, 3, and X. Multiple alternatively spliced variants, encoding the same protein, have been identified. [provided by RefSeq</p>
Other Designations	heterochromatin protein 1-beta heterochromatin protein p25 beta modifier 1 protein