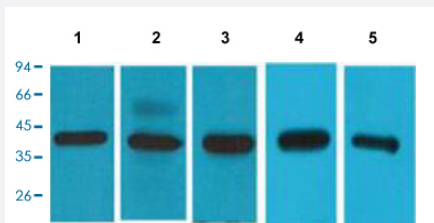


EIF4A1 monoclonal antibody, clone M8

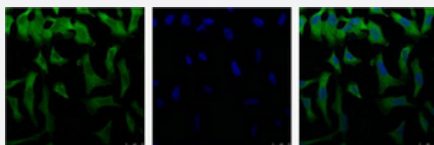
Catalog # MAB15256 Size 100 uL

Applications



Western Blot

Western Blot analysis of lane 1: 293T cell, Lane 2: HeLa cell, Lane 3: HepG2 cell, Lane 4: mouse brain and Lane 5: rat brain.



Immunofluorescence

Immunofluorescence staining of HeLa cell line with antibody (Left), DAPI (Middle) and merge (Right).

Specification

Product Description	Mouse monoclonal antibody raised against synthetic peptide of human EIF4A1.
Immunogen	A synthetic peptide corresponding to C-terminus of human EIF4A1.
Host	Mouse
Reactivity	Human, Mouse
Form	Liquid
Purification	Affinity purification
Isotype	IgG1

Recommend Usage	Immunofluorescence (1:100-1:200) Immunohistochemistry (Formalin/PFA-fixed paraffin-embedded sections) (1:50-1:300) Western Blot (1:1000-1:3000) The optimal working dilution should be determined by the end user.
Storage Buffer	In PBS (50% glycerol, 0.5% BSA, 0.02% sodium azide).
Storage Instruction	Store at -20°C. Aliquot to avoid repeated freezing and thawing.
Note	This product contains sodium azide: a POISONOUS AND HAZARDOUS SUBSTANCE which should be handled by trained staff only.

Applications

- Western Blot

Western Blot analysis of lane 1: 293T cell, Lane 2: HeLa cell, Lane 3: HepG2 cell, Lane 4: mouse brain and Lane 5: rat brain.

- Immunohistochemistry (Formalin/PFA-fixed paraffin-embedded sections)

- Immunofluorescence

Immunofluorescence staining of HeLa cell line with antibody (Left), DAPI (Middle) and merge (Right).

Gene Info — EIF4A1

Entrez GeneID	1973
Protein Accession#	P60842
Gene Name	EIF4A1
Gene Alias	DDX2A, EIF-4A, EIF4A
Gene Description	eukaryotic translation initiation factor 4A, isoform 1
Omim ID	602641
Gene Ontology	Hyperlink
Gene Summary	O
Other Designations	OTTHUMP00000135288 eukaryotic initiation factor 4A eukaryotic translation initiation factor 4A isoform 1