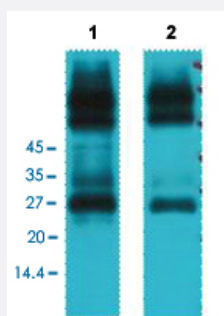


EFHD1 monoclonal antibody, clone 3G2

Catalog # MAB15252 Size 100 uL

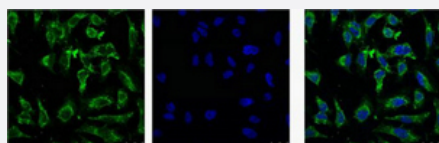
Applications



Western Blot (Tissue lysate)

Western Blot analysis of Line 1: mouse spleen tissue and Lane 2: rat spleen tissue.

Immunofluorescence



Immunofluorescence staining of HeLa cell line with antibody (Left), DAPI (Middle) and merge (Right).

Specification

Product Description	Mouse monoclonal antibody raised against synthetic peptide of human EFHD1.
Immunogen	A synthetic peptide corresponding to N-terminus of human EFHD1.
Host	Mouse
Reactivity	Human, Mouse, Rat
Form	Liquid
Purification	Affinity purification
Isotype	IgG1

Recommend Usage	Immunofluorescence (1:100-1:200) Immunohistochemistry (Formalin/PFA-fixed paraffin-embedded sections) (1:50-1:300) Western Blot (1:2000) The optimal working dilution should be determined by the end user.
Storage Buffer	In PBS (50% glycerol, 0.5% BSA, 0.02% sodium azide).
Storage Instruction	Store at -20°C. Aliquot to avoid repeated freezing and thawing.
Note	This product contains sodium azide: a POISONOUS AND HAZARDOUS SUBSTANCE which should be handled by trained staff only.

Applications

- Western Blot (Tissue lysate)

Western Blot analysis of Line 1: mouse spleen tissue and Lane 2: rat spleen tissue.

- Immunohistochemistry (Formalin/PFA-fixed paraffin-embedded sections)

- Immunofluorescence

Immunofluorescence staining of HeLa cell line with antibody (Left), DAPI (Middle) and merge (Right).

Gene Info — EFHD1

Entrez GeneID	80303
Protein Accession#	Q9BUP0
Gene Name	EFHD1
Gene Alias	DKFZp781H0842, FLJ13612, MST133, MSTP133, PP3051
Gene Description	EF-hand domain family, member D1
Omim ID	611617
Gene Ontology	Hyperlink
Gene Summary	EFHD1 is an EF-hand domain-containing protein that displays increased expression during neuronal differentiation (Tominaga and Tomooka, 2002 [PubMed 12270117]).[supplied by OMIM]
Other Designations	EF hand domain containing 1 EF hand domain family, member D1