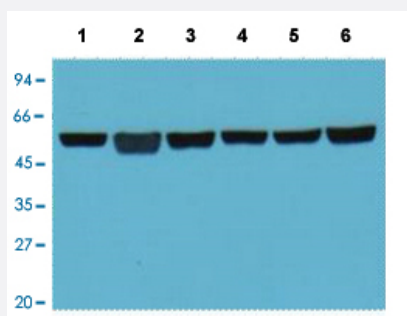


TUBB3 monoclonal antibody, clone 5G3

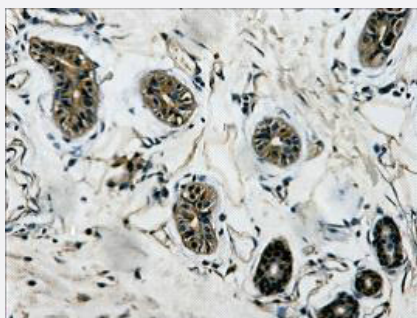
Catalog # MAB15246 Size 100 uL

Applications



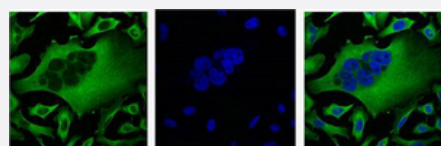
Western Blot

Western Blot analysis of Lane 1: A549 cell, Lane 2: rat brain tissue, Lane 3: mouse brain tissue, Lane 4: chicken lung tissue, Lane 5: rabbit testis tissue and Lane 6: sheep muscle tissue.



Immunohistochemistry (Formalin/PFA-fixed paraffin-embedded sections)

Immunohistochemical staining (Formalin-fixed paraffin-embedded sections) of human colon tissue.



Immunofluorescence

Immunofluorescence staining of HeLa cell line with antibody (Left), DAPI (Middle) and merge (Right).

Specification

Product Description

Mouse monoclonal antibody raised against synthetic peptide of human TUBB3.

Immunogen

A synthetic peptide corresponding to C-terminus of human TUBB3.

Host	Mouse
Reactivity	Chicken, Human, Mouse, Rabbit, Rat, Sheep
Form	Liquid
Purification	Affinity purification
Isotype	IgG1
Recommend Usage	Immunofluorescence Immunohistochemistry (Formalin/PFA-fixed paraffin-embedded sections) (1:200) Western Blot (1:5000) The optimal working dilution should be determined by the end user.
Storage Buffer	In PBS (50% glycerol, 0.5% BSA, 0.02% sodium azide).
Storage Instruction	Store at -20°C. Aliquot to avoid repeated freezing and thawing.
Note	This product contains sodium azide: a POISONOUS AND HAZARDOUS SUBSTANCE which should be handled by trained staff only.

Applications

- Western Blot

Western Blot analysis of Lane 1: A549 cell, Lane 2: rat brain tissue, Lane 3: mouse brain tissue, Lane 4: chicken lung tissue, Lane 5: rabbit testis tissue and Lane 6: sheep muscle tissue.

- Immunohistochemistry (Formalin/PFA-fixed paraffin-embedded sections)

Immunohistochemical staining (Formalin-fixed paraffin-embedded sections) of human colon tissue.

- Immunofluorescence

Immunofluorescence staining of HeLa cell line with antibody (Left), DAPI (Middle) and merge (Right).

Gene Info — TUBB3

Entrez GeneID	10381
Protein Accession#	Q13509
Gene Name	TUBB3
Gene Alias	MC1R, TUBB4, beta-4

Gene Description	tubulin, beta 3
Omim ID	602661
Gene Ontology	Hyperlink
Gene Summary	O
Other Designations	tubulin, beta, 4

Pathway

- [Gap junction](#)
- [Pathogenic Escherichia coli infection - EHEC](#)