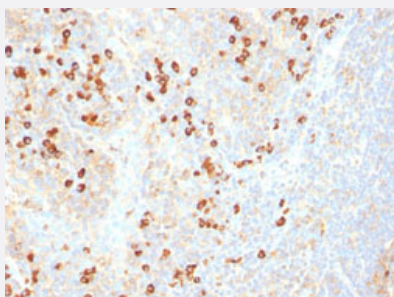


Plasma Cell Marker monoclonal antibody, clone SPM310

Catalog # MAB15236 Size 100 ug

Applications



Immunohistochemistry (Formalin/PFA-fixed paraffin-embedded sections)

Immunohistochemical staining (Formalin-fixed paraffin-embedded sections) of human tonsil with Plasma Cell Marker monoclonal antibody, clone SPM310 (Cat # MAB15236).

Specification

| | |
|----------------------------|--|
| Product Description | Mouse monoclonal antibody raised against native human plasma cell marker. |
| Immunogen | Pancreatic cancer-related mucin. |
| Host | Mouse |
| Reactivity | Human |
| Form | Liquid |
| Purification | Protein A/G purification |
| Isotype | IgG2a |
| Recommend Usage | Immunohistochemistry (Formalin/PFA-fixed paraffin-embedded sections) (0.1-0.2 ug/mL) The optimal working dilution should be determined by the end user. |
| Storage Buffer | In 10 mM PBS (0.05% BSA, 0.05% sodium azide). |
| Storage Instruction | Store at 4°C. |
| Note | This product contains sodium azide: a POISONOUS AND HAZARDOUS SUBSTANCE which should be handled by trained staff only. |

Applications

- Immunohistochemistry (Formalin/PFA-fixed paraffin-embedded sections)

Immunohistochemical staining (Formalin-fixed paraffin-embedded sections) of human tonsil with Plasma Cell Marker monoclonal antibody, clone SPM310 (Cat # MAB15236).

Publication Reference

- [VS38: a new monoclonal antibody for detecting plasma cell differentiation in routine sections.](#)

Turley H, Jones M, Erber W, Mayne K, de Waele M, Gatter K.

Journal of Clinical Pathology 1994 May; 47(5):418.

Application: IHC-Fr, IHC-P, WB-Ce, Human, Human lung cancer, Human lymphoma, MCF-7 cells