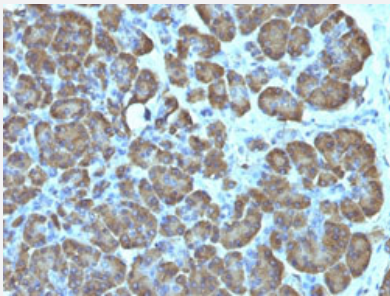


Mitochondria monoclonal antibody, clone SPM198

Catalog # MAB15234 Size 100 ug

Applications



Immunohistochemistry (Formalin/PFA-fixed paraffin-embedded sections)

Immunohistochemical staining (Formalin-fixed paraffin-embedded sections) of human pancreas with Mitochondria monoclonal antibody, clone SPM198 (Cat # MAB15234).

Specification

Product Description	Mouse monoclonal antibody raised against native human mitochondria.
Immunogen	Semi-purified mitochondrial preparation.
Host	Mouse
Theoretical MW (kDa)	60
Reactivity	Human
Form	Liquid
Purification	Protein A/G purification
Isotype	IgG1, kappa
Recommend Usage	Immunofluorescence (0.5-1 ug/mL) Immunohistochemistry (Formalin/PFA-fixed paraffin-embedded sections) (0.5-1 ug/mL) Western Blotting (0.25-0.5 ug/mL) The optimal working dilution should be determined by the end user.
Storage Buffer	In 10 mM PBS (0.05% BSA, 0.05% sodium azide).

Storage Instruction

Store at 4°C.

Note

This product contains sodium azide: a POISONOUS AND HAZARDOUS SUBSTANCE which should be handled by trained staff only.

Applications

- Western Blot
- Immunohistochemistry (Formalin/PFA-fixed paraffin-embedded sections)
Immunohistochemical staining (Formalin-fixed paraffin-embedded sections) of human pancreas with Mitochondria monoclonal antibody, clone SPM198 (Cat # MAB15234).
- Immunofluorescence