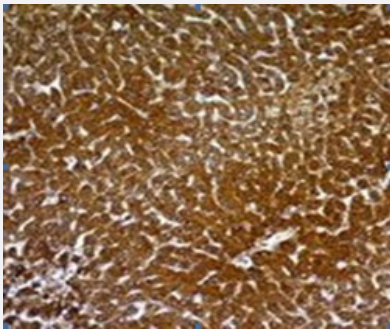


Hepatocyte Specific Antigen monoclonal antibody, clone SPM582

Catalog # MAB15233 Size 100 ug

Applications



Immunohistochemistry (Formalin/PFA-fixed paraffin-embedded sections)

Immunohistochemical staining (Formalin-fixed paraffin-embedded sections) of human hepatocellular carcinoma with Hepatocyte Specific Antigen monoclonal antibody, clone SPM582 (Cat # MAB15233).

Specification

Product Description Mouse monoclonal antibody raised against native human hepatocyte specific antigen.

Immunogen Extract of a formalin-fixed, rejected-allograft of a human liver.

Host Mouse

Reactivity Human

Form Liquid

Purification Protein A/G purification

Isotype IgG1

Recommend Usage Immunofluorescence (0.5-1 ug/mL)
Immunohistochemistry (Formalin/PFA-fixed paraffin-embedded sections) (1-2 ug/mL)
The optimal working dilution should be determined by the end user.

Storage Buffer In 10 mM PBS.

Storage Instruction Store at -20 to -80°C.
Aliquot to avoid repeated freezing and thawing.

Applications

- Immunohistochemistry (Formalin/PFA-fixed paraffin-embedded sections)

Immunohistochemical staining (Formalin-fixed paraffin-embedded sections) of human hepatocellular carcinoma with Hepatocyte Specific Antigen monoclonal antibody, clone SPM582 (Cat # MAB15233).

- Immunofluorescence

Publication Reference

- [Hep par 1 antibody stain for the differential diagnosis of hepatocellular carcinoma: 676 tumors tested using tissue microarrays and conventional tissue sections.](#)

Fan Z, van de Rijn M, Montgomery K, Rouse RV.

Modern Pathology 2003 Feb; 16(2):137.

- [Hepatocyte paraffin 1: a monoclonal antibody that reacts with hepatocytes and can be used for differential diagnosis of hepatic tumors.](#)

Wennerberg AE, Nalesnik MA, Coleman WB.

The American Journal of Pathology 1993 Oct; 143(4):1050.