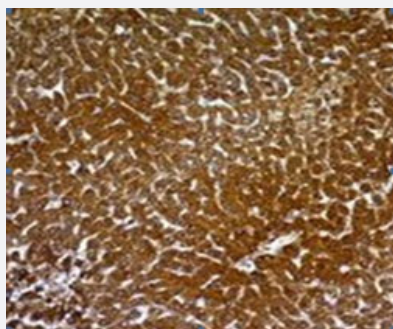


# Hepatocyte Specific Antigen monoclonal antibody, clone SPM582

Catalog # MAB15232      Size 100 ug

## Applications



### Immunohistochemistry (Formalin/PFA-fixed paraffin-embedded sections)

Immunohistochemical staining (Formalin-fixed paraffin-embedded sections) of human hepatocellular carcinoma with Hepatocyte Specific Antigen monoclonal antibody, clone SPM582 (Cat # MAB15232).

## Specification

**Product Description** Mouse monoclonal antibody raised against native human hepatocyte specific antigen.

**Immunogen** Extract of a formalin-fixed, rejected-allograft of a human liver.

**Host** Mouse

**Reactivity** Human

**Form** Liquid

**Purification** Protein A/G purification

**Isotype** IgG1

**Recommend Usage** Immunofluorescence (0.5-1 ug/mL)  
Immunohistochemistry (Formalin/PFA-fixed paraffin-embedded sections) (1-2 ug/mL)  
The optimal working dilution should be determined by the end user.

**Storage Buffer** In 10 mM PBS (0.05% BSA, 0.05% sodium azide).

**Storage Instruction** Store at 4°C.

**Note**

This product contains sodium azide: a POISONOUS AND HAZARDOUS SUBSTANCE which should be handled by trained staff only.

## Applications

- Immunohistochemistry (Formalin/PFA-fixed paraffin-embedded sections)

Immunohistochemical staining (Formalin-fixed paraffin-embedded sections) of human hepatocellular carcinoma with Hepatocyte Specific Antigen monoclonal antibody, clone SPM582 (Cat # MAB15232).

- Immunofluorescence

## Publication Reference

- [Hep par 1 antibody stain for the differential diagnosis of hepatocellular carcinoma: 676 tumors tested using tissue microarrays and conventional tissue sections.](#)

Fan Z, van de Rijn M, Montgomery K, Rouse RV.

Modern Pathology 2003 Feb; 16(2):137.

- [Hepatocyte paraffin 1: a monoclonal antibody that reacts with hepatocytes and can be used for differential diagnosis of hepatic tumors.](#)

Wennerberg AE, Nalesnik MA, Coleman WB.

The American Journal of Pathology 1993 Oct; 143(4):1050.