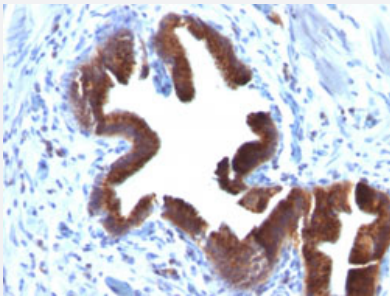


Golgi Complex monoclonal antibody, clone SPM581

Catalog # MAB15231 Size 100 ug

Applications



Immunohistochemistry (Formalin/PFA-fixed paraffin-embedded sections)

Immunohistochemical staining (Formalin-fixed paraffin-embedded sections) of human gallbladder with Golgi Complex monoclonal antibody, clone SPM581 (Cat # MAB15231).

Specification

| | |
|----------------------------|---|
| Product Description | Mouse monoclonal antibody raised against native human Golgi Complex. |
| Immunogen | SU-DHL-1 large cell lymphoma cells. |
| Host | Mouse |
| Reactivity | Human |
| Specificity | This antibody recognizes Golgi complex in human cells. It reacts specifically with human cells. |
| Form | Liquid |
| Purification | Protein A/G purification |
| Isotype | IgG1, kappa |

| | |
|----------------------------|--|
| Recommend Usage | Flow Cytometry (0.5-1.0 ug/million cells) Immunocytochemistry (Acetone or paraformaldehyde fixed) (1-2 ug/mL for 30 min) Immunofluorescence (1-2 ug/mL) Immunohistochemistry (Formalin/PFA-fixed paraffin-embedded sections) (1-2 ug/mL for 30 minutes at RT) (Staining of formalin-fixed tissues requires heating tissue sections in 10 mM Tris with 1 mM EDTA, pH 9.0, for 45 min at 95°C followed by cooling at RT for 20 minutes) Western Blotting (1-2 ug/mL) The optimal working dilution should be determined by the end user. |
| Storage Buffer | In 10 mM PBS. |
| Storage Instruction | Store at -20 to -80°C. Aliquot to avoid repeated freezing and thawing. |

Applications

- Western Blot
- Immunohistochemistry (Formalin/PFA-fixed paraffin-embedded sections)
Immunohistochemical staining (Formalin-fixed paraffin-embedded sections) of human gallbladder with Golgi Complex monoclonal antibody, clone SPM581 (Cat # MAB15231).
- Immunocytochemistry
- Immunofluorescence
- Flow Cytometry

Publication Reference

- [Cellular localization and functional characterization of the equilibrative nucleoside transporters of antitumor nucleosides.](#)
Endo Y, Obata T, Murata D, Ito M, Sakamoto K, Fukushima M, Yamasaki Y, Yamada Y, Natsume N, Sasaki T.
Cancer Science 2007 Oct; 98(10):1633.
- [Binding and phosphorylation of a novel male germ cell-specific cGMP-dependent protein kinase-anchoring protein by cGMP-dependent protein kinase Ialpha.](#)
Yuasa K, Omori K, Yanaka N.
The Journal of Biological Chemistry 2000 Feb; 275(7):4897.