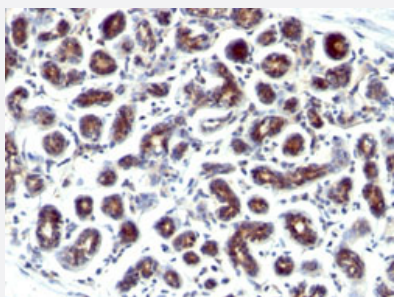


TFF1 monoclonal antibody, clone SPM573

Catalog # MAB15213 Size 100 ug

Applications



Immunohistochemistry (Formalin/PFA-fixed paraffin-embedded sections)

Immunohistochemical staining (Formalin-fixed paraffin-embedded sections) of human breast carcinoma with TFF1 monoclonal antibody, clone SPM573 (Cat # MAB15213).

Specification

Product Description	Mouse monoclonal antibody raised against synthetic peptide of human TFF1.
Immunogen	A synthetic peptide corresponding to amino acids 57-84 at C-terminus of human TFF1.
Sequence	CFDDTVRGVPWCFYPNTIDVPPEEECEF
Host	Mouse
Theoretical MW (kDa)	6.5
Reactivity	Human
Form	Liquid
Purification	Protein A/G purification
Isotype	IgG1, kappa
Recommend Usage	Flow Cytometry (0.5-1 ug/10 ⁶ cells in 0.1 mL) Immunofluorescence (0.5-1 ug/mL) Immunohistochemistry (Formalin/PFA-fixed paraffin-embedded sections) (0.5-1 ug/mL) The optimal working dilution should be determined by the end user.

Storage Buffer	In 10 mM PBS.
----------------	---------------

Storage Instruction	Store at -20 to -80°C. Aliquot to avoid repeated freezing and thawing.
---------------------	---

Applications

- Immunohistochemistry (Formalin/PFA-fixed paraffin-embedded sections)

Immunohistochemical staining (Formalin-fixed paraffin-embedded sections) of human breast carcinoma with TFF1 monoclonal antibody, clone SPM573 (Cat # MAB15213).

- Immunofluorescence

- Flow Cytometry

Gene Info — TFF1

Entrez GeneID	7031
---------------	----------------------

Protein Accession#	P04155
--------------------	------------------------

Gene Name	TFF1
-----------	------

Gene Alias	BCEI, D21S21, HP1.A, HPS2, pNR-2, pS2
------------	---------------------------------------

Gene Description	trefoil factor 1
------------------	------------------

Omim ID	113710
---------	------------------------

Gene Ontology	Hyperlink
---------------	---------------------------

Gene Summary	Members of the trefoil family are characterized by having at least one copy of the trefoil motif, a 40 -amino acid domain that contains three conserved disulfides. They are stable secretory proteins expressed in gastrointestinal mucosa. Their functions are not defined, but they may protect the mucosa from insults, stabilize the mucus layer, and affect healing of the epithelium. This gene, which is expressed in the gastric mucosa, has also been studied because of its expression in human tumors. This gene and two other related trefoil family member genes are found in a cluster on chromosome 21. [provided by RefSeq]
--------------	--

Other Designations	breast cancer estrogen-inducible sequence gastrointestinal trefoil protein pS2
--------------------	--

Publication Reference

- [Characterization of monoclonal antibodies raised to C-terminal peptides of pS2: a major trefoil peptide and motility factor expressed in adenocarcinomas and regions of mucosal injury.](#)

Williams R, Elia G, Stamp GW, Oates T, Wright NA, Lalani EN.

Human Pathology 1996 Dec; 27(12):1259.

Disease

- [Cerebral Hemorrhage](#)
- [Chronic Disease](#)
- [Genetic Predisposition to Disease](#)
- [Hypertension](#)
- [Intracranial Hemorrhages](#)
- [Kidney Calculi](#)
- [Kidney Diseases](#)
- [Lung Neoplasms](#)
- [Pulmonary Disease](#)
- [Stroke](#)
- [Subarachnoid Hemorrhage](#)
- [Urinary Bladder Neoplasms](#)
- [Werner syndrome](#)