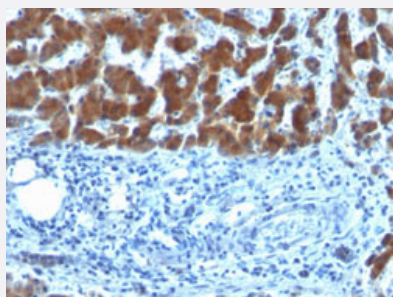


Retinol Binding Protein monoclonal antibody, clone SPM442

Catalog # MAB15210 Size 100 ug

Applications



Immunohistochemistry (Formalin/PFA-fixed paraffin-embedded sections)

Immunohistochemical staining (Formalin-fixed paraffin-embedded sections) of human hepatocellular carcinoma with Retinol Binding Protein monoclonal antibody, clone SPM442 (Cat # MAB15210).

Specification

Product Description	Mouse monoclonal antibody raised against native human Retinol Binding Protein.
Immunogen	Native purified Retinol binding protein from human plasma.
Host	Mouse
Theoretical MW (kDa)	21-25
Reactivity	Human
Form	Liquid
Purification	Protein A/G purification
Isotype	IgG1, kappa
Recommend Usage	Immunofluorescence (1-2 ug/mL) Immunohistochemistry (Formalin/PFA-fixed paraffin-embedded sections) (0.5-1 ug/mL) The optimal working dilution should be determined by the end user.
Storage Buffer	In 10 mM PBS (0.05% BSA, 0.05% sodium azide).
Storage Instruction	Store at 4°C.

Note

This product contains sodium azide: a POISONOUS AND HAZARDOUS SUBSTANCE which should be handled by trained staff only.

Applications

- Immunohistochemistry (Formalin/PFA-fixed paraffin-embedded sections)

Immunohistochemical staining (Formalin-fixed paraffin-embedded sections) of human hepatocellular carcinoma with Retinol Binding Protein monoclonal antibody, clone SPM442 (Cat # MAB15210).

- Immunofluorescence

Publication Reference

- [Antigenic determinants of human serum retinol binding protein as probed with monoclonal antibodies.](#)

Reddy BM, Karande AA, Adiga PR.

Molecular Immunology 1993 Oct; 30(15):1355.

Application: ELISA, WB, Human, Rat, Rabbit, Serum