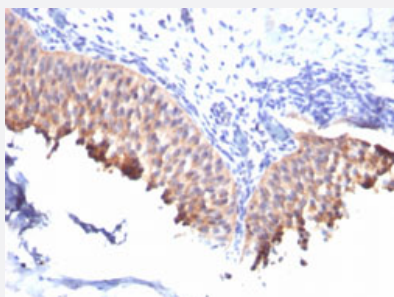


KRT10 monoclonal antibody, clone SPM261

Catalog # MAB15203 Size 100 ug

Applications



Immunohistochemistry (Formalin/PFA-fixed paraffin-embedded sections)

Immunohistochemical staining (Formalin-fixed paraffin-embedded sections) of human bladder carcinoma with KRT10 monoclonal antibody, clone SPM261 (Cat # MAB15203).

Specification

Product Description	Mouse monoclonal antibody raised against native human KRT10.
Immunogen	Skin extract of a human Psoriasis patient.
Host	Mouse
Theoretical MW (kDa)	56.5
Reactivity	Human
Form	Liquid
Purification	Protein A/G purification
Isotype	IgG1, kappa
Recommend Usage	Flow Cytometry (0.5-1 ug/10 ⁶ cells in 0.1 mL) Immunofluorescence (0.5-1 ug/mL) Immunohistochemistry (Formalin/PFA-fixed paraffin-embedded sections) (0.1-0.2 ug/mL) The optimal working dilution should be determined by the end user.
Storage Buffer	In 10 mM PBS.

Storage Instruction

Store at -20 to -80°C.
Aliquot to avoid repeated freezing and thawing.

Applications

- Immunohistochemistry (Formalin/PFA-fixed paraffin-embedded sections)

Immunohistochemical staining (Formalin-fixed paraffin-embedded sections) of human bladder carcinoma with KRT10 monoclonal antibody, clone SPM261 (Cat # MAB15203).

- Immunofluorescence
- Flow Cytometry

Gene Info — KRT10

Entrez GeneID [3858](#)

Protein Accession# [P13645](#)

Gene Name KRT10

Gene Alias CK10, K10, KPP

Gene Description keratin 10

Omim ID [113800](#) [148080](#) [600648](#) [607602](#)

Gene Ontology [Hyperlink](#)

Gene Summary This gene encodes a member of the type I (acidic) cytokeratin family, which belongs to the superfamily of intermediate filament (IF) proteins. Keratins are heteropolymeric structural proteins which form the intermediate filament. These filaments, along with actin microfilaments and microtubules, compose the cytoskeleton of epithelial cells. Mutations in this gene are associated with epidermolytic hyperkeratosis. This gene is located within a cluster of keratin family members on chromosome 17q21. [provided by RefSeq]

Other Designations cytokeratin 10

Publication Reference

- [Deletion of mouse Porcn blocks Wnt ligand secretion and reveals an ectodermal etiology of human focal dermal hypoplasia/Goltz syndrome.](#)

Barrott JJ, Cash GM, Smith AP, Barrow JR, Murtaugh LC.

PNAS 2011 Aug; 108(31):12752.

Application: IHC-Fr, IHC-P, Mouse, Dorsal skins, Keratinocytes

- [Out of balance: consequences of a partial keratin 10 knockout.](#)

Reichelt J, Bauer C, Porter R, Lane E, Magin V.

Journal of Cell Science 1997 Sep; 110(Pt 18):2175.