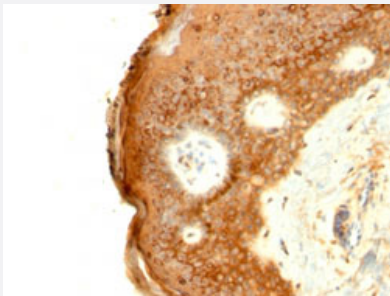


IVL monoclonal antibody, clone SPM259

Catalog # MAB15199 Size 100 ug

Applications



Immunohistochemistry (Formalin/PFA-fixed paraffin-embedded sections)

Immunohistochemical staining (Formalin-fixed paraffin-embedded sections) of human skin with IVL monoclonal antibody, clone SPM259 (Cat # MAB15199).

Specification

Product Description	Mouse monoclonal antibody raised against native human IVL.
Immunogen	Native purified IVL from human keratinocytes.
Host	Mouse
Theoretical MW (kDa)	66-170
Reactivity	Human
Form	Liquid
Purification	Protein A/G purification
Isotype	IgG1, kappa
Recommend Usage	Flow Cytometry (0.5-1 ug/10 ⁶ cells in 0.1 mL) Immunofluorescence (1-2 ug/mL) Immunohistochemistry (Formalin/PFA-fixed paraffin-embedded sections) (0.1-0.2 ug/mL) The optimal working dilution should be determined by the end user.
Storage Buffer	In 10 mM PBS.

Storage Instruction

Store at -20 to -80°C.
Aliquot to avoid repeated freezing and thawing.

Applications

- Immunohistochemistry (Formalin/PFA-fixed paraffin-embedded sections)

Immunohistochemical staining (Formalin-fixed paraffin-embedded sections) of human skin with IVL monoclonal antibody, clone SPM259 (Cat # MAB15199).

- Immunofluorescence
- Flow Cytometry

Gene Info — IVL

Entrez GeneID	3713
---------------	----------------------

Protein Accession#	P07476
--------------------	------------------------

Gene Name	IVL
-----------	-----

Gene Alias	-
------------	---

Gene Description	involucrin
------------------	------------

Omim ID	147360
---------	------------------------

Gene Ontology	Hyperlink
---------------	---------------------------

Gene Summary	Involucrin, a component of the keratinocyte crosslinked envelope, is found in the cytoplasm and crosslinked to membrane proteins by transglutaminase. This gene is mapped to 1q21, among calpactin I light chain, trichohyalin, profilaggrin, loricrin, and calcyclin. [provided by RefSeq]
--------------	---

Other Designations	OTTHUMP00000014402
--------------------	--------------------

Publication Reference

- [Characterisation of eight monoclonal antibodies to involucrin.](#)

Hudson DL, Weiland KL, Dooley TP, Simon M, Watt FM.
Hybridoma 1992 Jun; 11(3):367.

Disease

- [Dermatitis](#)
- [Genetic Predisposition to Disease](#)