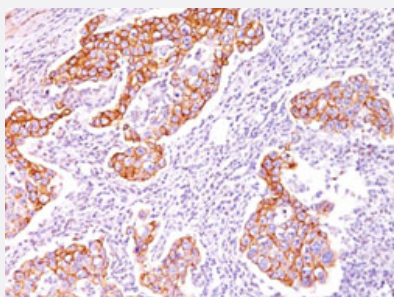


Phosphotyrosine monoclonal antibody, clone SPM102

Catalog # MAB15196 Size 100 ug

Applications



Immunohistochemistry (Formalin/PFA-fixed paraffin-embedded sections)

Immunohistochemical staining (Formalin-fixed paraffin-embedded sections) of human breast carcinoma with Phosphotyrosine monoclonal antibody, clone SPM102 (Cat # MAB15196).

Specification

Product Description	Mouse monoclonal antibody raised against native phosphotyrosine.
Immunogen	Phosphotyrosine conjugated to KLH.
Host	Mouse
Form	Liquid
Purification	Protein A/G purification
Isotype	IgG2b
Recommend Usage	Flow Cytometry (0.5-1 ug/10 ⁶ cells in 0.1 mL) Immunofluorescence (1-2 ug/mL) Immunohistochemistry (Formalin/PFA-fixed paraffin-embedded sections) (1-2 ug/mL) Immunoprecipitation (1-2 ug/500 ug protein lysate) Western Blotting (0.5-1 ug/mL) The optimal working dilution should be determined by the end user.
Storage Buffer	In 10 mM PBS (0.05% BSA, 0.05% sodium azide).
Storage Instruction	Store at 4°C.

Note

This product contains sodium azide: a POISONOUS AND HAZARDOUS SUBSTANCE which should be handled by trained staff only.

Applications

- Western Blot
- Immunohistochemistry (Formalin/PFA-fixed paraffin-embedded sections)

Immunohistochemical staining (Formalin-fixed paraffin-embedded sections) of human breast carcinoma with Phosphotyrosine monoclonal antibody, clone SPM102 (Cat # MAB15196).

- Immunofluorescence
- Immunoprecipitation
- Flow Cytometry

Publication Reference

- [Monoclonal antibodies to phosphotyrosine.](#)

Glenney JR Jr, Zokas L, Kamps MP.

Journal of Immunological Methods 1988 May; 109(2):277.