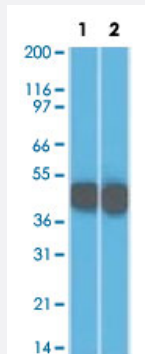


KRT18 monoclonal antibody, clone SPM265

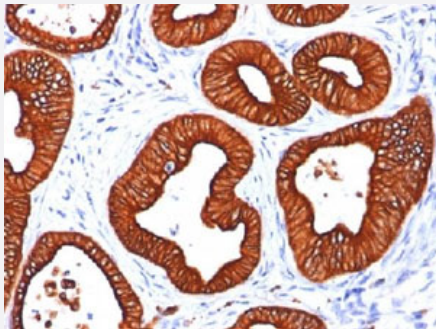
Catalog # MAB15164 Size 100 ug

Applications



Western Blot (Cell lysate)

Western Blot (Cell lysate) analysis of (1) HeLa cell line and (2) A431 cell line.



Immunohistochemistry (Formalin/PFA-fixed paraffin-embedded sections)

Immunohistochemical staining (Formalin-fixed paraffin-embedded sections) of human colon carcinoma.

Specification

Product Description	Mouse monoclonal antibody raised against native human KRT18.
Immunogen	PMC-42 human breast carcinoma cells.
Host	Mouse
Reactivity	Human
Form	Liquid
Purification	Protein A/G purification

Isotype	IgG1
Recommend Usage	Flow Cytometry (0.5-1 ug/million cells) Immunofluorescence (1-2 ug/mL) Western Blot (0.5-1 ug/mL) The optimal working dilution should be determined by the end user.
Storage Buffer	In 10 mM PBS.
Storage Instruction	Store at 4°C. For long term storage store at -20°C to -80°C. Aliquot to avoid repeated freezing and thawing.

Applications

- Western Blot (Cell lysate)

Western Blot (Cell lysate) analysis of (1) HeLa cell line and (2) A431 cell line.

- Immunohistochemistry (Formalin/PFA-fixed paraffin-embedded sections)

Immunohistochemical staining (Formalin-fixed paraffin-embedded sections) of human colon carcinoma.

- Immunofluorescence

- Flow Cytometry

Gene Info — KRT18

Entrez GeneID	3875
Protein Accession#	P05783
Gene Name	KRT18
Gene Alias	CYK18, K18
Gene Description	keratin 18
Omim ID	148070 215600
Gene Ontology	Hyperlink

Gene Summary

KRT18 encodes the type I intermediate filament chain keratin 18. Keratin 18, together with its filament partner keratin 8, are perhaps the most commonly found members of the intermediate filament gene family. They are expressed in single layer epithelial tissues of the body. Mutations in this gene have been linked to cryptogenic cirrhosis. Two transcript variants encoding the same protein have been found for this gene. [provided by RefSeq]

Other Designations

cell proliferation-inducing protein 46|cytokeratin 18

Publication Reference

- [Use of keratin antibodies in tumor diagnosis.](#)

Lane EB, Alexander CM.

Seminars in Cancer Biology 1990 Jun; 1(3):165.

- [Monoclonal antibodies against individual cytokeratins in the detection of metastatic spread.](#)

Kovarik J, Rejthar A, Lauerova L, Vojtesek B, Bartkova J.

International Journal of Cancer. Supplement 1988 Jan; 3:50.

Application: IHC-P, Human, Human bone-marrow samples, Human lymph-node specimens

Pathway

- [Pathogenic Escherichia coli infection - EHEC](#)

Disease

- [Cleft Lip](#)
- [Cleft Palate](#)
- [Drug-Induced Liver Injury](#)
- [Genetic Predisposition to Disease](#)
- [Liver Cirrhosis](#)
- [Liver Failure](#)