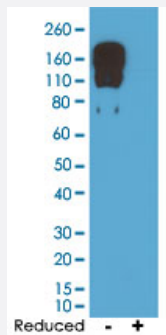


RecomAb™

Mouse IgG2c monoclonal antibody, clone RM223

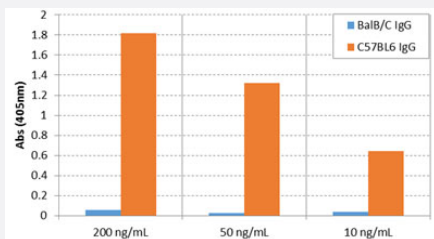
Catalog # MAB15161 Size 100 ug

Applications



Western Blot

Western Blot analysis of nonreduced(-) and reduced(+) mouse IgG2c with Mouse IgG2c monoclonal antibody, clone RM223 (Cat # MAB15161).



Enzyme-linked Immunoabsorbent Assay

ELISA analysis of Mouse IgG2c monoclonal antibody, clone RM223 (Cat # MAB15161) at the following concentrations: 200 ng/mL, 50 ng/mL and 10 ng/mL. The result shows this antibody reacts to the C57BL6 IgG containing IgG2c, and does not react to BalB/C IgG containing IgG2a. An alkaline phosphatase conjugated anti-rabbit IgG as the secondary antibody.

Enzyme-linked Immunoabsorbent Assay

A titer ELISA of mouse IgG2c. The plate was coated with different amounts of mouse IgG2c. A serial dilution of Mouse IgG2c monoclonal antibody, clone RM223 (Cat# MAB15161) was used as the primary antibody. An alkaline phosphatase conjugated anti-rabbit IgG as the secondary antibody.

Specification

Product Description

Rabbit recombinant monoclonal antibody raised against of mouse IgG2c.

Antibody Species	Rabbit
Immunogen	Original antibody is raised against a synthetic peptide corresponding to mouse IgG2c.
Sequence	N/A
Reactivity	Mouse
Specificity	Recognizes the Fc region of mouse IgG2c. No cross reactivity with mouse IgG1, IgG2a, IgG2b, IgG3, IgM, IgA, IgE, human IgG, or rat IgG.
Form	Liquid
Purification	Protein A affinity purification
Isotype	IgG
Recommend Usage	ELISA (0.01-0.2 ug/mL) Flow Cytometry Immunocytochemistry (0.5-2 ug/mL) Immunohistochemistry (0.5-2 ug/mL) Immunoprecipitation Western Blotting (0.5-2 ug/mL) The optimal working dilution should be determined by the end user.
Storage Buffer	In PBS (50% glycerol, 1% BSA, 0.09% sodium azide)
Storage Instruction	Store at -20°C. Aliquot to avoid repeated freezing and thawing.
Note	This product contains sodium azide: a POISONOUS AND HAZARDOUS SUBSTANCE which should be handled by trained staff only.

Applications

- Western Blot

Western Blot analysis of nonreduced(-) and reduced(+) mouse IgG2c with Mouse IgG2c monoclonal antibody, clone RM223 (Cat # MAB15161).

- Immunohistochemistry

- Immunocytochemistry

- Enzyme-linked Immunoabsorbent Assay

ELISA analysis of Mouse IgG2c monoclonal antibody, clone RM223 (Cat # MAB15161) at the following concentrations: 200 ng/mL, 50 ng/mL and 10 ng/mL. The result shows this antibody reacts to the C57BL6 IgG containing IgG2c, and does not react to BalB/C IgG containing IgG2a. An alkaline phosphatase conjugated anti-rabbit IgG as the secondary antibody.

- Enzyme-linked Immunoabsorbent Assay

A titer ELISA of mouse IgG2c. The plate was coated with different amounts of mouse IgG2c. A serial dilution of Mouse IgG2c monoclonal antibody, clone RM223 (Cat# MAB15161) was used as the primary antibody. An alkaline phosphatase conjugated anti-rabbit IgG as the secondary antibody.