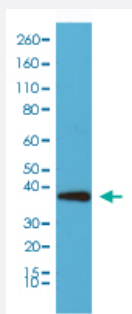


RecomAb™

SYP monoclonal antibody, clone RM258

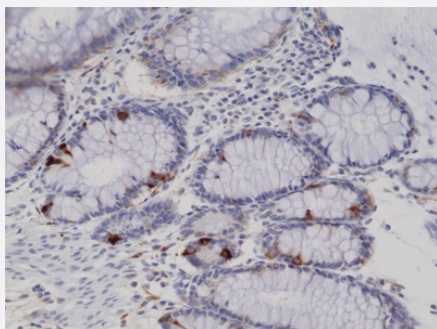
Catalog # MAB15137 Size 100 uL

Applications



Western Blot (Cell lysate)

Western blot analysis of HeLa whole cell lysates with SYP monoclonal antibody, clone RM258 (Cat # MAB15137), showed SYP (~38 kDa) expression in HeLa cells.



Immunohistochemistry (Formalin/PFA-fixed paraffin-embedded sections)

Immunohistochemical staining (Formalin-fixed paraffin-embedded sections) of human colon with SYP monoclonal antibody, clone RM258 (Cat # MAB15137) at a 1:200 dilution.

Specification

| | |
|---------------------|---|
| Product Description | Rabbit recombinant monoclonal antibody raised against of human SYP. |
| Antibody Species | Rabbit |
| Immunogen | Original antibody is raised against a synthetic peptide corresponding to C-terminus of human SYP. |
| Sequence | N/A |
| Reactivity | Human |
| Form | Liquid |

| | |
|---------------------|--|
| Purification | Protein A affinity purification |
| Isotype | IgG |
| Recommend Usage | Immunohistochemistry (Formalin/PFA-fixed paraffin-embedded sections) (1:200-1:500) Western Blot (1:1000-1:2000) The optimal working dilution should be determined by the end user. |
| Storage Buffer | In PBS (50% glycerol, 1% BSA, 0.09% sodium azide) |
| Storage Instruction | Store at -20°C. Aliquot to avoid repeated freezing and thawing. |
| Note | This product contains sodium azide: a POISONOUS AND HAZARDOUS SUBSTANCE which should be handled by trained staff only. |

Applications

- Western Blot (Cell lysate)

Western blot analysis of HeLa whole cell lysates with SYP monoclonal antibody, clone RM258 (Cat # MAB15137), showed SYP (~38 kDa) expression in HeLa cells.

- Immunohistochemistry (Formalin/PFA-fixed paraffin-embedded sections)

Immunohistochemical staining (Formalin-fixed paraffin-embedded sections) of human colon with SYP monoclonal antibody, clone RM258 (Cat # MAB15137) at a 1:200 dilution.

Gene Info — SYP

| | |
|--------------------|--|
| Entrez GeneID | 6855 |
| Protein Accession# | P08247 |
| Gene Name | SYP |
| Gene Alias | - |
| Gene Description | synaptophysin |
| Omim ID | 313475 |
| Gene Ontology | Hyperlink |
| Gene Summary | Synaptophysin (p38) is an integral membrane protein of small synaptic vesicles in brain and endocrine cells.[supplied by OMIM] |
| Other Designations | major synaptic vesicle protein P38 |

Disease

- [Attention Deficit Disorder with Hyperactivity](#)
- [Genetic Predisposition to Disease](#)