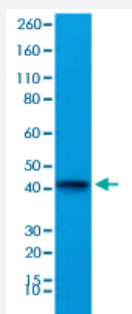


RecomAb™

# ACTC1 monoclonal antibody, clone RM257

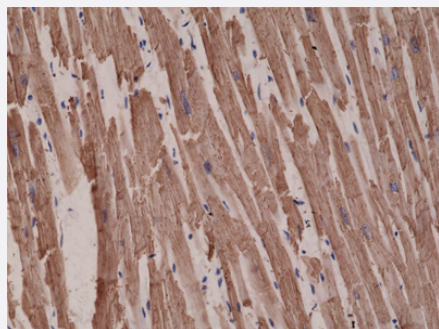
Catalog # MAB15136      Size 100 uL

## Applications



### Western Blot (Tissue lysate)

Western blot analysis of mouse heart tissue lysates with ACTC1 monoclonal antibody, clone RM257 (Cat # MAB15136) at a 1:1000 dilution.



### Immunohistochemistry (Formalin/PFA-fixed paraffin-embedded sections)

Immunohistochemical staining (Formalin-fixed paraffin-embedded sections) of human heart with ACTC1 monoclonal antibody, clone RM257 (Cat # MAB15136) at a 1:1000 dilution.

## Specification

<b>Product Description</b>	Rabbit recombinant monoclonal antibody raised against of human ACTC1.
<b>Antibody Species</b>	Rabbit
<b>Immunogen</b>	Original antibody is raised against a synthetic peptide corresponding to N-terminus of human ACTC 1.
<b>Sequence</b>	N/A
<b>Reactivity</b>	Human, Mouse
<b>Form</b>	Liquid

Purification	Protein A affinity purification
Isotype	IgG
Recommend Usage	Immunohistochemistry (Formalin/PFA-fixed paraffin-embedded sections) (1:1000-1:2500) Western Blot (1:1000-1:2000) The optimal working dilution should be determined by the end user.
Storage Buffer	In PBS (50% glycerol, 1% BSA, 0.09% sodium azide)
Storage Instruction	Store at -20°C. Aliquot to avoid repeated freezing and thawing.
Note	This product contains sodium azide: a POISONOUS AND HAZARDOUS SUBSTANCE which should be handled by trained staff only.

## Applications

- Western Blot (Tissue lysate)

Western blot analysis of mouse heart tissue lysates with ACTC1 monoclonal antibody, clone RM257 (Cat # MAB15136) at a 1:1000 dilution.

- Immunohistochemistry (Formalin/PFA-fixed paraffin-embedded sections)

Immunohistochemical staining (Formalin-fixed paraffin-embedded sections) of human heart with ACTC1 monoclonal antibody, clone RM257 (Cat # MAB15136) at a 1:1000 dilution.

## Gene Info — ACTC1

Entrez GeneID	<a href="#">70</a>
Protein Accession#	<a href="#">P68032</a>
Gene Name	ACTC1
Gene Alias	ACTC, CMD1R, CMH11
Gene Description	actin, alpha, cardiac muscle 1
Omim ID	<a href="#">102540 192600</a>
Gene Ontology	<a href="#">Hyperlink</a>

**Gene Summary**

Actins are highly conserved proteins that are involved in various types of cell motility. Polymerization of globular actin (G-actin) leads to a structural filament (F-actin) in the form of a two-stranded helix. Each actin can bind to four others. The protein encoded by this gene belongs to the actin family which is comprised of three main groups of actin isoforms, alpha, beta, and gamma. The alpha actins are found in muscle tissues and are a major constituent of the contractile apparatus. Defects in this gene have been associated with idiopathic dilated cardiomyopathy (IDC) and familial hypertrophic cardiomyopathy (FHC). [provided by RefSeq]

**Other Designations**

cardiac muscle alpha actin 1

**Pathway**

- [Cardiac muscle contraction](#)
- [Hypertrophic cardiomyopathy \(HCM\)](#)

**Disease**

- [Cardiomegaly](#)
- [Cardiomyopathies](#)
- [Cardiomyopathy](#)
- [Cardiovascular Diseases](#)
- [Diabetes Mellitus](#)
- [Edema](#)
- [Genetic Predisposition to Disease](#)
- [Myopia](#)