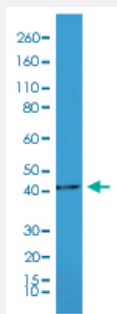


RecomAb™

ACTA2 monoclonal antibody, clone RM253

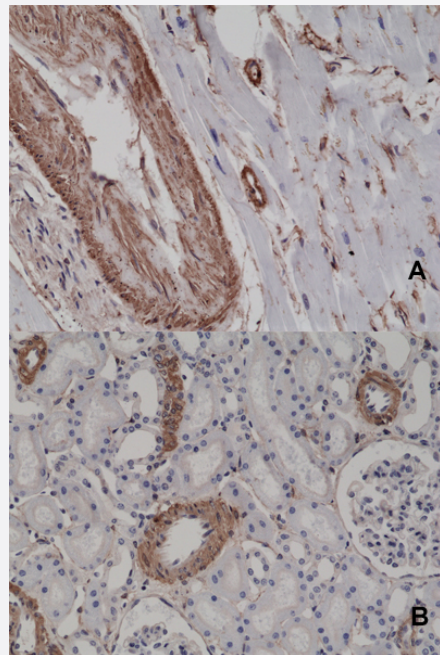
Catalog # MAB15131 Size 100 uL

Applications



Western Blot (Tissue lysate)

Western blot analysis of mouse heart tissue lysates with ACTA2 monoclonal antibody, clone RM253 (Cat # MAB15131) at a 1:1000 dilution.



Immunohistochemistry (Formalin/PFA-fixed paraffin-embedded sections)

Immunohistochemical staining (Formalin-fixed paraffin-embedded sections) of (A) human heart and (B) human kidney with ACTA2 monoclonal antibody, clone RM253 (Cat # MAB15131) at a 1:2500 dilution.

Specification

Product Description	Rabbit recombinant monoclonal antibody raised against of human ACTA2.
Antibody Species	Rabbit

Immunogen	Original antibody is raised against a synthetic peptide corresponding to N-terminus of human ACTA2.
Sequence	N/A
Reactivity	Human, Mouse
Form	Liquid
Purification	Protein A affinity purification
Isotype	IgG
Recommend Usage	Immunohistochemistry (Formalin/PFA-fixed paraffin-embedded sections) (1:1000-1:2500) Western Blot (1:1000-1:2000) The optimal working dilution should be determined by the end user.
Storage Buffer	In PBS (50% glycerol, 1% BSA, 0.09% sodium azide)
Storage Instruction	Store at -20°C. Aliquot to avoid repeated freezing and thawing.
Note	This product contains sodium azide: a POISONOUS AND HAZARDOUS SUBSTANCE which should be handled by trained staff only.

Applications

- Western Blot (Tissue lysate)

Western blot analysis of mouse heart tissue lysates with ACTA2 monoclonal antibody, clone RM253 (Cat # MAB15131) at a 1:1000 dilution.

- Immunohistochemistry (Formalin/PFA-fixed paraffin-embedded sections)

Immunohistochemical staining (Formalin-fixed paraffin-embedded sections) of (A) human heart and (B) human kidney with ACTA2 monoclonal antibody, clone RM253 (Cat # MAB15131) at a 1:2500 dilution.

Gene Info — ACTA2

Entrez GeneID	59
Protein Accession#	P62736
Gene Name	ACTA2
Gene Alias	AAT6, ACTSA
Gene Description	actin, alpha 2, smooth muscle, aorta

Omim ID [102620](#)

Gene Ontology [Hyperlink](#)

Gene Summary

The protein encoded by this gene belongs to the actin family of proteins, which are highly conserved proteins that play a role in cell motility, structure and integrity. Alpha, beta and gamma actin isoforms have been identified, with alpha actins being a major constituent of the contractile apparatus, while beta and gamma actins are involved in the regulation of cell motility. This actin is an alpha actin that is found in skeletal muscle. Defects in this gene cause aortic aneurysm familial thoracic type 6. Multiple alternatively spliced variants, encoding the same protein, have been identified. [provided by RefSeq]

Other Designations OTTHUMP00000020042|alpha 2 actin|alpha-cardiac actin|growth-inhibiting gene 46

Pathway

- [Vascular smooth muscle contraction](#)

Disease

- [Alzheimer Disease](#)
- [Cardiovascular Diseases](#)
- [Diabetes Mellitus](#)
- [Edema](#)
- [Genetic Predisposition to Disease](#)