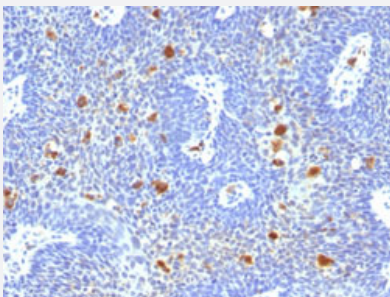


# Human Papilloma Virus 16 monoclonal antibody, clone HPV16/1296

Catalog # MAB15106      Size 100 ug

## Applications



### Immunohistochemistry (Formalin/PFA-fixed paraffin-embedded sections)

Immunohistochemical staining (Formalin-fixed paraffin-embedded sections) of human uterine cervix with Human Papilloma Virus 16 monoclonal antibody, clone HPV16/1296 (Cat # MAB15106).

## Specification

<b>Product Description</b>	Mouse monoclonal antibody raised against human papilloma virus 16.
<b>Immunogen</b>	Human papilloma virus type 16.
<b>Host</b>	Mouse
<b>Reactivity</b>	Human papilloma virus (HPV)
<b>Form</b>	Liquid
<b>Purification</b>	Protein A/G purification
<b>Isotype</b>	IgG2a, kappa
<b>Recommend Usage</b>	Immunofluorescence (0.5-1 ug/mL) Immunohistochemistry (Formalin/PFA-fixed paraffin-embedded sections) (0.5-1 ug/mL) The optimal working dilution should be determined by the end user.
<b>Storage Buffer</b>	In 10 mM PBS (0.05% BSA, 0.05% sodium azide).
<b>Storage Instruction</b>	Store at 4°C.

**Note**

This product contains sodium azide: a POISONOUS AND HAZARDOUS SUBSTANCE which should be handled by trained staff only.

## Applications

- Immunohistochemistry (Formalin/PFA-fixed paraffin-embedded sections)

Immunohistochemical staining (Formalin-fixed paraffin-embedded sections) of human uterine cervix with Human Papilloma Virus 16 monoclonal antibody, clone HPV16/1296 (Cat # MAB15106).

- Immunofluorescence

## Publication Reference

- [Production and characterisation of a monoclonal antibody to human papillomavirus type 16 using recombinant vaccinia virus.](#)

McLean CS, Churcher MJ, Meinke J, Smith GL, Higgins G, Stanley M, Minson AC.

Journal of Clinical Pathology 1990 Jun; 43(6):488.

Application: ELISA, ICC, IF, IHC-P, WB-Tr, Hamster, Human, Monkey, BHK, CV-1 cells, Human cervical biopsy specimens