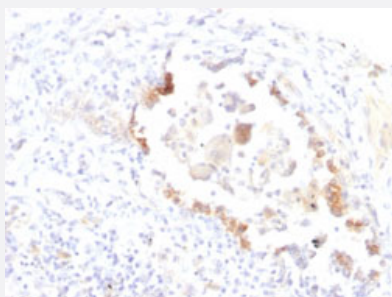


Lewis Y (Blood Group Antigen) monoclonal antibody, clone LWY/1463

Catalog # MAB15104 Size 100 ug

Applications



Immunohistochemistry (Formalin/PFA-fixed paraffin-embedded sections)

Immunohistochemical staining (Formalin-fixed paraffin-embedded sections) of human lung cancer with Lewis Y (Blood Group Antigen) monoclonal antibody, clone LWY/1463 (Cat # MAB15104).

Specification

Product Description	Mouse monoclonal antibody raised against native human Lewis Y (Blood Group Antigen).
Immunogen	Human colon carcinoma cells.
Host	Mouse
Reactivity	Human
Form	Liquid
Purification	Protein A/G purification
Isotype	IgG1, kappa
Recommend Usage	Flow Cytometry (0.5-1 ug/10 ⁶ cells) Immunofluorescence (0.5-1 ug/mL) Immunohistochemistry (Formalin/PFA-fixed paraffin-embedded sections) (0.5-1 ug/mL) The optimal working dilution should be determined by the end user.
Storage Buffer	In 10 mM PBS (0.05% BSA, 0.05% sodium azide).

Storage Instruction

Store at 4°C.

Note

This product contains sodium azide: a POISONOUS AND HAZARDOUS SUBSTANCE which should be handled by trained staff only.

Applications

- Immunohistochemistry (Formalin/PFA-fixed paraffin-embedded sections)

Immunohistochemical staining (Formalin-fixed paraffin-embedded sections) of human lung cancer with Lewis Y (Blood Group Antigen) monoclonal antibody, clone LWY/1463 (Cat # MAB15104).

- Immunofluorescence

- Flow Cytometry

Publication Reference

- [A monoclonal antibody to Lewis Y/Lewis b revealing mimicry of the histone H1 to carbohydrate structures.](#)

Christensen PA, Danielczyk A, Ravn P, Stahn R, Karsten U, Goletz S.

Scandinavian Journal of Immunology 2007 Apr; 65(4):362.