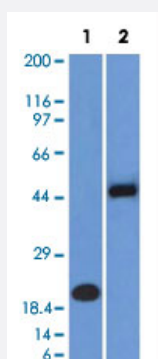


PAX8 monoclonal antibody, clone PAX8/1492

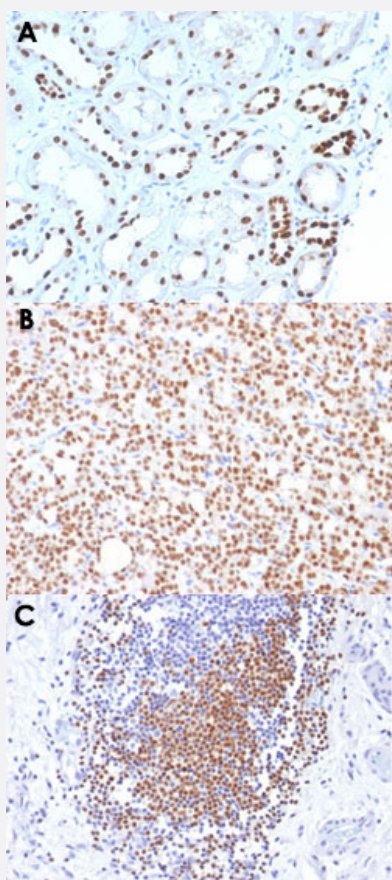
Catalog # MAB15042 Size 100 ug

Applications



Western Blot

Western Blot analysis of Lane 1: recombinant protein and Lane 2: Raji cell lysate with PAX8 monoclonal antibody, clone PAX8/1492 (Cat # MAB15042).



Immunohistochemistry (Formalin/PFA-fixed paraffin-embedded sections)

Immunohistochemical staining (Formalin-fixed paraffin-embedded sections) of human renal cell carcinoma (A), human thyroid carcinoma (B) and human urothelial carcinoma (C) with PAX8 monoclonal antibody, clone PAX8/1492 (Cat # MAB15042).

Specification

Product Description	Mouse monoclonal antibody raised against partial recombinant human PAX8.
Immunogen	Recombinant protein corresponding to amino acids 60-261 of human PAX8.
Host	Mouse
Theoretical MW (kDa)	62
Reactivity	Human
Form	Liquid
Purification	Protein A/G purification
Isotype	IgG2a
Recommend Usage	Flow Cytometry (0.5-1 ug/10 ⁶ cells) Immunofluorescence (1-2 ug/mL) Immunohistochemistry (Formalin/PFA-fixed paraffin-embedded sections) (1-2 ug/mL) Western Blotting (0.5-1 ug/mL) The optimal working dilution should be determined by the end user.
Storage Buffer	In 10 mM PBS (0.05% BSA, 0.05% sodium azide).
Storage Instruction	Store at 4°C.
Note	This product contains sodium azide: a POISONOUS AND HAZARDOUS SUBSTANCE which should be handled by trained staff only.

Applications

- Western Blot

Western Blot analysis of Lane 1: recombinant protein and Lane 2: Raji cell lysate with PAX8 monoclonal antibody, clone PAX8/1492 (Cat # MAB15042).

- Immunohistochemistry (Formalin/PFA-fixed paraffin-embedded sections)

Immunohistochemical staining (Formalin-fixed paraffin-embedded sections) of human renal cell carcinoma (A), human thyroid carcinoma (B) and human urothelial carcinoma (C) with PAX8 monoclonal antibody, clone PAX8/1492 (Cat # MAB15042).

- Immunofluorescence

- Flow Cytometry

Gene Info — PAX8

Entrez GeneID	7849
Protein Accession#	Q06710
Gene Name	PAX8
Gene Alias	-
Gene Description	paired box 8
Omim ID	167415 218700
Gene Ontology	Hyperlink
Gene Summary	This gene encodes a member of the paired box (PAX) family of transcription factors. Members of this gene family typically encode proteins that contain a paired box domain, an octapeptide, and a paired-type homeodomain. This nuclear protein is involved in thyroid follicular cell development and expression of thyroid-specific genes. Mutations in this gene have been associated with thyroid dysgenesis, thyroid follicular carcinomas and atypical follicular thyroid adenomas. Alternatively spliced transcript variants encoding different isoforms have been described. [provided by RefSeq]
Other Designations	OTTHUMP00000158659 OTTHUMP00000158660 paired domain gene 8

Publication Reference

- [Expression of PAX8 in normal and neoplastic renal tissues: an immunohistochemical study.](#)

Tong GX, Yu WM, Beaubier NT, Weeden EM, Hamele-Bena D, Mansukhani MM, O'Toole KM.

Modern Pathology 2009 Sep; 22(9):1218.

Pathway

- [Pathways in cancer](#)
- [Thyroid cancer](#)

Disease

- [Cleft Lip](#)

- [Cleft Palate](#)
- [Congenital Hypothyroidism](#)
- [Genetic Predisposition to Disease](#)
- [Thyroid Neoplasms](#)
- [Tobacco Use Disorder](#)