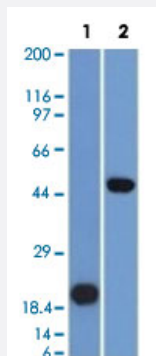


# PAX8 monoclonal antibody, clone PAX8/1491

Catalog # MAB15040

Size 100 ug

## Applications



### Western Blot

Western Blot analysis of Lane 1: recombinant protein and Lane 2: Raji cell lysate with PAX8 monoclonal antibody, clone PAX8/1491 (Cat # MAB15040).

## Specification

**Product Description** Mouse monoclonal antibody raised against partial recombinant human PAX8.

**Immunogen** Recombinant protein corresponding to amino acids 60-261 of human PAX8.

**Host** Mouse

**Theoretical MW (kDa)** 62

**Reactivity** Human

**Form** Liquid

**Purification** Protein A/G purification

**Isotype** IgG2b

**Recommend Usage**

- Flow Cytometry (0.5-1 ug/10<sup>6</sup> cells)
- Immunofluorescence (1-2 ug/mL)
- Western Blotting (0.5-1 ug/mL)
- The optimal working dilution should be determined by the end user.

**Storage Buffer** In 10 mM PBS (0.05% BSA, 0.05% sodium azide).

## Storage Instruction

Store at 4°C.

## Note

This product contains sodium azide: a POISONOUS AND HAZARDOUS SUBSTANCE which should be handled by trained staff only.

## Applications

- Western Blot

Western Blot analysis of Lane 1: recombinant protein and Lane 2: Raji cell lysate with PAX8 monoclonal antibody, clone PAX8/1491 (Cat # MAB15040).

- Immunofluorescence

- Flow Cytometry

## Gene Info — PAX8

## Entrez GeneID

[7849](#)

## Protein Accession#

[Q06710](#)

## Gene Name

PAX8

## Gene Alias

-

## Gene Description

paired box 8

## Omim ID

[167415 218700](#)

## Gene Ontology

[Hyperlink](#)

## Gene Summary

This gene encodes a member of the paired box (PAX) family of transcription factors. Members of this gene family typically encode proteins that contain a paired box domain, an octapeptide, and a paired-type homeodomain. This nuclear protein is involved in thyroid follicular cell development and expression of thyroid-specific genes. Mutations in this gene have been associated with thyroid dysgenesis, thyroid follicular carcinomas and atypical follicular thyroid adenomas. Alternatively spliced transcript variants encoding different isoforms have been described. [provided by RefSeq]

## Other Designations

OTTHUMP00000158659|OTTHUMP00000158660|paired domain gene 8

## Publication Reference

- [Expression of PAX8 in normal and neoplastic renal tissues: an immunohistochemical study.](#)

Tong GX, Yu WM, Beaubier NT, Weeden EM, Hamele-Bena D, Mansukhani MM, O'Toole KM.

Modern Pathology 2009 Sep; 22(9):1218.

## Pathway

- [Pathways in cancer](#)
- [Thyroid cancer](#)

## Disease

- [Cleft Lip](#)
- [Cleft Palate](#)
- [Congenital Hypothyroidism](#)
- [Genetic Predisposition to Disease](#)
- [Thyroid Neoplasms](#)
- [Tobacco Use Disorder](#)