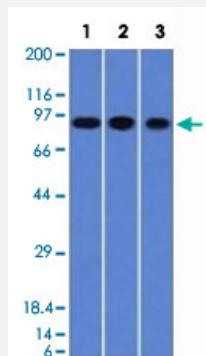


# Villin monoclonal antibody, clone VIL1/1314

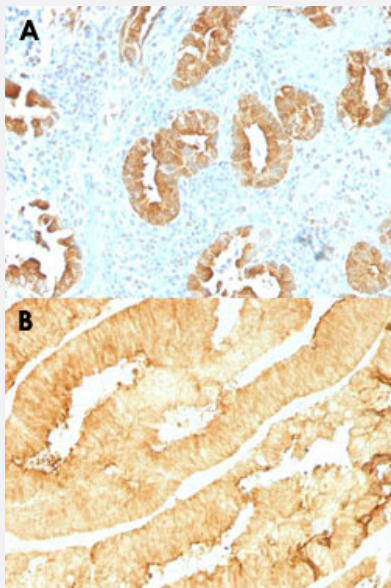
Catalog # MAB15029      Size 100 ug

## Applications



### Western Blot (Cell lysate)

Western Blot analysis of Lane 1: A549, Lane 2: HepG2, and Lane 3: HCT116 cell lysates with Villin monoclonal antibody, clone VIL1/1314 (Cat # MAB15029).



### Immunohistochemistry (Formalin/PFA-fixed paraffin-embedded sections)

Immunohistochemical staining (Formalin-fixed paraffin-embedded sections) of human rectum (A) and human colon (B) with Villin monoclonal antibody, clone VIL1/1314 (Cat # MAB15029).

## Specification

### Product Description

Mouse monoclonal antibody raised against partial recombinant human Villin.

### Immunogen

Recombinant protein corresponding to 133 residues of human Villin.

Sequence	MGPESTRMERLRGMTLAKEIRDQERGGRTYGVVDGENELASPKLMEVMNHVLGKRRELKAAV PDTVVEPALKAALKLYHVSDSEGNLVVREVATRPLTQDLLSHEDCYILDQGGLKIYVWKGKKANE QEKKGA
Host	Mouse
Theoretical MW (kDa)	93
Reactivity	Human
Form	Liquid
Purification	Protein A/G purification
Isotype	IgG1, kappa
Recommend Usage	Flow Cytometry (0.5-1 ug/10 <sup>6</sup> cells in 0.1 mL) Immunofluorescence (1-2 ug/mL) Immunohistochemistry (Formalin/PFA-fixed paraffin-embedded sections) (0.25-0.5 ug/mL) Western Blotting (1-2 ug/mL) The optimal working dilution should be determined by the end user.
Storage Buffer	In 10 mM PBS.
Storage Instruction	Store at -20 to -80°C. Aliquot to avoid repeated freezing and thawing.

## Applications

- Western Blot (Cell lysate)

Western Blot analysis of Lane 1: A549, Lane 2: HepG2, and Lane 3: HCT116 cell lysates with Villin monoclonal antibody, clone VIL1/1314 (Cat # MAB15029).

- Immunohistochemistry (Formalin/PFA-fixed paraffin-embedded sections)

Immunohistochemical staining (Formalin-fixed paraffin-embedded sections) of human rectum (A) and human colon (B) with Villin monoclonal antibody, clone VIL1/1314 (Cat # MAB15029).

- Immunofluorescence

- Flow Cytometry

## Publication Reference

- [Distribution and pattern of expression of villin, a gastrointestinal-associated cytoskeletal protein, in human carcinomas: a study employing paraffin-embedded tissue.](#)

Bacchi CE, Gown AM.

Laboratory Investigation 1991 Mar; 64(3):418.

- [Localization of villin, a cytoskeletal protein specific to microvilli, in human ileum and colon and in colonic neoplasms.](#)

West AB, Isaac CA, Carboni JM, Morrow JS, Mooseker MS, Barwick KW.

Gastroenterology 1988 Feb; 94(2):343.