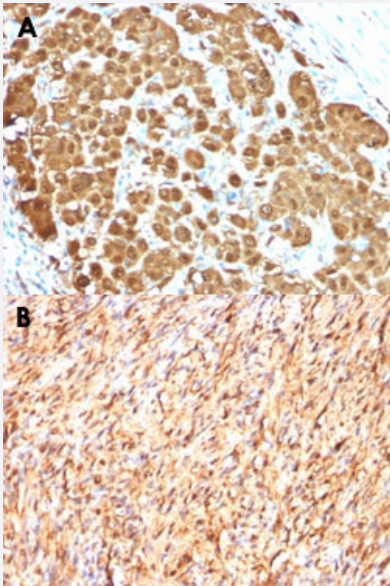


# S100B monoclonal antibody, clone S100B/1012

Catalog # MAB14980

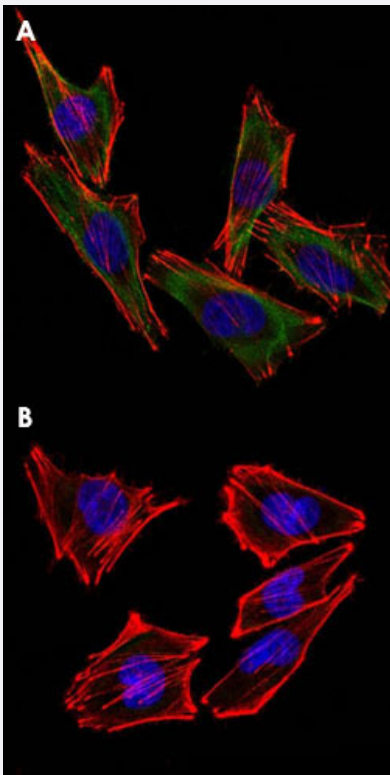
Size 100 ug

## Applications



### Immunohistochemistry (Formalin/PFA-fixed paraffin-embedded sections)

Immunohistochemical staining (Formalin-fixed paraffin-embedded sections) of human melanoma (A) and human schwannoma (B) with S100B monoclonal antibody, clone S100B/1012 (Cat # MAB14980).



### Immunofluorescence

Immunofluorescent staining of A2058 cells with S100B monoclonal antibody, clone S100B/1012 (Cat # MAB14980) (Green). Blue: DAPI was used to stain the cell nuclei. Red: F-actin filaments were labeled with DyLight 554 Phalloidin.

## Specification

<b>Product Description</b>	Mouse monoclonal antibody raised against full length recombinant human S100B.
<b>Immunogen</b>	Recombinant protein corresponding to full length human S100B.
<b>Host</b>	Mouse
<b>Theoretical MW (kDa)</b>	10-12
<b>Reactivity</b>	Human
<b>Form</b>	Liquid
<b>Purification</b>	Protein A/G purification
<b>Isotype</b>	IgG2a, kappa
<b>Recommend Usage</b>	Flow Cytometry (0.5-1 ug/10 <sup>6</sup> cells) Immunofluorescence (1-2 ug/mL) Immunohistochemistry (Formalin/PFA-fixed paraffin-embedded sections) (0.25-0.5 ug/mL) Western Blotting (0.5-1 ug/mL) The optimal working dilution should be determined by the end user.
<b>Storage Buffer</b>	In 10 mM PBS (0.05% BSA, 0.05% sodium azide).
<b>Storage Instruction</b>	Store at 4°C.
<b>Note</b>	This product contains sodium azide: a POISONOUS AND HAZARDOUS SUBSTANCE which should be handled by trained staff only.

## Applications

- Western Blot
- Immunohistochemistry (Formalin/PFA-fixed paraffin-embedded sections)  
Immunohistochemical staining (Formalin-fixed paraffin-embedded sections) of human melanoma (A) and human schwannoma (B) with S100B monoclonal antibody, clone S100B/1012 (Cat # MAB14980).
- Immunofluorescence  
Immunofluorescent staining of A2058 cells with S100B monoclonal antibody, clone S100B/1012 (Cat # MAB14980) (Green). Blue: DAPI was used to stain the cell nuclei. Red: F-actin filaments were labeled with DyLight 554 Phalloidin.
- Flow Cytometry

## Gene Info — S100B

Entrez GeneID [6285](#)

Protein Accession# [P04271](#)

Gene Name S100B

Gene Alias NEF, S100, S100beta

Gene Description S100 calcium binding protein B

Omim ID [176990](#)

Gene Ontology [Hyperlink](#)

**Gene Summary**

The protein encoded by this gene is a member of the S100 family of proteins containing 2 EF-hand calcium-binding motifs. S100 proteins are localized in the cytoplasm and/or nucleus of a wide range of cells, and involved in the regulation of a number of cellular processes such as cell cycle progression and differentiation. S100 genes include at least 13 members which are located as a cluster on chromosome 1q21; however, this gene is located at 21q22.3. This protein may function in Neurite extension, proliferation of melanoma cells, stimulation of Ca<sup>2+</sup> fluxes, inhibition of PKC-mediated phosphorylation, astrocytosis and axonal proliferation, and inhibition of microtubule assembly. Chromosomal rearrangements and altered expression of this gene have been implicated in several neurological, neoplastic, and other types of diseases, including Alzheimer's disease, Down's syndrome, epilepsy, amyotrophic lateral sclerosis, melanoma, and type I diabetes. [provided by RefSeq]

**Other Designations**

OTTHUMP00000174958|S-100 calcium-binding protein, beta chain|S100 beta|S100 calcium binding protein, beta (neural)|S100 calcium-binding protein, beta|S100 calcium-binding protein, beta (neural)

## Publication Reference

- [Calcium-binding proteins of the EF-type.](#)

Heizmann CW.

Journal of Cardiovascular Pharmacology 1988 May; 12 Suppl 5:S30.

## Disease

- [Alzheimer disease](#)
- [Bipolar Disorder](#)

- [Cognition Disorders](#)
- [Dementia](#)
- [Depressive Disorder](#)
- [Diseases in Twins](#)
- [Genetic Predisposition to Disease](#)
- [Mental Disorders](#)
- [Neuropsychological Tests](#)
- [Psychotic Disorders](#)
- [Schizophrenia](#)