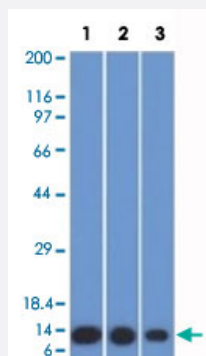


# S100A4 monoclonal antibody, clone S100A4/1482

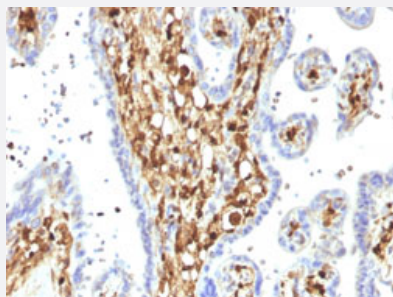
Catalog # MAB14979      Size 100 ug

## Applications



### Western Blot (Cell lysate)

Western Blot analysis of Lane 1: HeLa, Lane 2: A549 and Lane 3: A375 cell lysates with S100A4 monoclonal antibody, clone S100A4/1482 (Cat # MAB14979).



### Immunohistochemistry (Formalin/PFA-fixed paraffin-embedded sections)

Immunohistochemical staining (Formalin-fixed paraffin-embedded sections) of human placenta with S100A4 monoclonal antibody, clone S100A4/1482 (Cat # MAB14979).

## Specification

<b>Product Description</b>	Mouse monoclonal antibody raised against full length recombinant human S100A4.
<b>Immunogen</b>	Recombinant protein corresponding to full length human S100A4.
<b>Host</b>	Mouse
<b>Theoretical MW (kDa)</b>	10-12
<b>Reactivity</b>	Human
<b>Form</b>	Liquid

Purification	Protein A/G purification
Isotype	IgG1, kappa
Recommend Usage	Flow Cytometry (0.5-1 ug/10 <sup>6</sup> cells) Immunofluorescence (1-2 ug/mL) Immunohistochemistry (Formalin/PFA-fixed paraffin-embedded sections) (0.5-1 ug/mL) Western Blotting (0.5-1 ug/mL) The optimal working dilution should be determined by the end user.
Storage Buffer	In 10 mM PBS.
Storage Instruction	Store at -20 to -80°C. Aliquot to avoid repeated freezing and thawing.

## Applications

- Western Blot (Cell lysate)

Western Blot analysis of Lane 1: HeLa, Lane 2: A549 and Lane 3: A375 cell lysates with S100A4 monoclonal antibody, clone S100A4/1482 (Cat # MAB14979).

- Immunohistochemistry (Formalin/PFA-fixed paraffin-embedded sections)

Immunohistochemical staining (Formalin-fixed paraffin-embedded sections) of human placenta with S100A4 monoclonal antibody, clone S100A4/1482 (Cat # MAB14979).

- Immunofluorescence

- Flow Cytometry

## Gene Info — S100A4

Entrez GeneID	<a href="#">6275</a>
Protein Accession#	<a href="#">P26447</a>
Gene Name	S100A4
Gene Alias	18A2, 42A, CAPL, FSP1, MTS1, P9KA, PEL98
Gene Description	S100 calcium binding protein A4
Omim ID	<a href="#">114210</a>
Gene Ontology	<a href="#">Hyperlink</a>

**Gene Summary**

The protein encoded by this gene is a member of the S100 family of proteins containing 2 EF-hand calcium-binding motifs. S100 proteins are localized in the cytoplasm and/or nucleus of a wide range of cells, and involved in the regulation of a number of cellular processes such as cell cycle progression and differentiation. S100 genes include at least 13 members which are located as a cluster on chromosome 1q21. This protein may function in motility, invasion, and tubulin polymerization. Chromosomal rearrangements and altered expression of this gene have been implicated in tumor metastasis. Multiple alternatively spliced variants, encoding the same protein, have been identified. [provided by RefSeq]

**Other Designations**

OTTHUMP00000015467|OTTHUMP00000015468|OTTHUMP00000015469|OTTHUMP00000032895|S100 calcium binding protein A4 (calcium protein, calvasculin, metastasin, murine placental homolog)|S100 calcium-binding protein A4|S100 calcium-binding protein A4 (calcium prote

**Publication Reference**

- [S100A4 overexpression proves to be independent marker for breast cancer progression.](#)

Ismail NI, Kaur G, Hashim H, Hassan MS.

Cancer Cell International 2008 Sep; 8:12.

**Disease**

- [Dermatitis](#)
- [Genetic Predisposition to Disease](#)
- [Liver Cirrhosis](#)