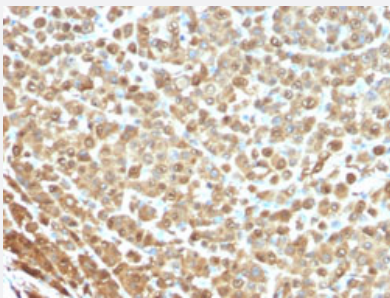


S100A1 monoclonal antibody, clone S1/61

Catalog # MAB14974 Size 100 ug

Applications



Immunohistochemistry (Formalin/PFA-fixed paraffin-embedded sections)

Immunohistochemical staining (Formalin-fixed paraffin-embedded sections) of human melanoma with S100A1 monoclonal antibody, clone S1/61 (Cat # MAB14974).

Specification

Product Description	Mouse monoclonal antibody raised against native human S100A1.
Immunogen	Native purified human S100 (conjugated with methylated BSA).
Host	Mouse
Theoretical MW (kDa)	10-12
Reactivity	Human
Form	Liquid
Purification	Protein A/G purification
Isotype	IgG1, kappa
Recommend Usage	Immunofluorescence (1-2 ug/mL) Immunohistochemistry (Formalin/PFA-fixed paraffin-embedded sections) (1-2 ug/mL) The optimal working dilution should be determined by the end user.
Storage Buffer	In 10 mM PBS (0.05% BSA, 0.05% sodium azide).
Storage Instruction	Store at 4°C.

Note

This product contains sodium azide: a POISONOUS AND HAZARDOUS SUBSTANCE which should be handled by trained staff only.

Applications

- Immunohistochemistry (Formalin/PFA-fixed paraffin-embedded sections)

Immunohistochemical staining (Formalin-fixed paraffin-embedded sections) of human melanoma with S100A1 monoclonal antibody, clone S1/61 (Cat # MAB14974).

- Immunofluorescence

Gene Info — S100A1

Entrez GeneID [6271](#)

Protein Accession# [P23297](#)

Gene Name S100A1

Gene Alias S100, S100-alpha, S100A

Gene Description S100 calcium binding protein A1

Omim ID [176940](#)

Gene Ontology [Hyperlink](#)

Gene Summary

The protein encoded by this gene is a member of the S100 family of proteins containing 2 EF-hand calcium-binding motifs. S100 proteins are localized in the cytoplasm and/or nucleus of a wide range of cells, and involved in the regulation of a number of cellular processes such as cell cycle progression and differentiation. S100 genes include at least 13 members which are located as a cluster on chromosome 1q21. This protein may function in stimulation of Ca²⁺-induced Ca²⁺ release, inhibition of microtubule assembly, and inhibition of protein kinase C-mediated phosphorylation. Reduced expression of this protein has been implicated in cardiomyopathies. [provided by RefSeq]

Other Designations OTTHUMP00000035100|S100 alpha|S100 calcium-binding protein A1|S100 protein, alpha polypeptide

Publication Reference

- [New sites of human S-100 immunoreactivity detected with monoclonal antibodies.](#)

Vanstapel MJ, Gatter KC, de Wolf-Peeters C, Mason DY, Desmet VD.

American Journal of Clinical Pathology 1986 Feb; 85(2):160.

- [Production of monoclonal antibodies directed against antigenic determinants common to the alpha- and beta-chain of bovine brain S-100 protein.](#)

Vanstapel MJ, Peeters B, Cordell J, Heyns W, De Wolf-Peeters C, Desmet V, Mason D.

Laboratory Investigation 1985 Feb; 52(2):232.

Disease

- [Breast cancer](#)
- [Breast Neoplasms](#)
- [Dermatitis](#)
- [DNA Damage](#)
- [Genetic Predisposition to Disease](#)