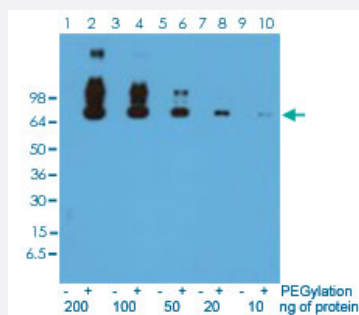


RecomAb™

# Polyethylene glycol (methoxy group) monoclonal antibody, clone RM105 (Biotin)

Catalog # MAB14965      Size 50 ug

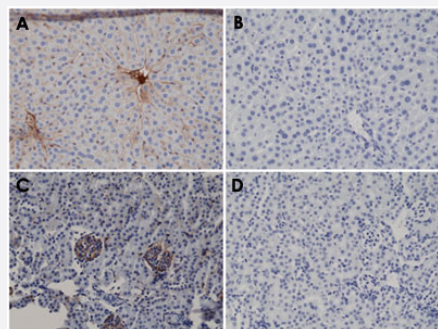
## Applications



### Western Blot

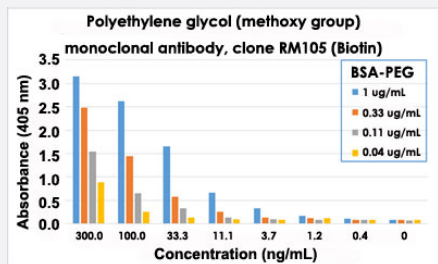
Western blot analysis of BSA and PEGylated BSA with Polyethylene glycol (methoxy group) monoclonal antibody, clone RM105 (Biotin) (Cat # MAB14965) at 0.1 ug/mL working concentration.

### Immunohistochemistry (Formalin/PFA-fixed paraffin-embedded sections)



### Enzyme-linked Immunoabsorbent Assay

ELISA analysis of different PEGylated BSA with Polyethylene glycol (methoxy group) monoclonal antibody, clone RM105 (Biotin) (Cat # MAB14965) at the following concentrations: 1 ug/mL, 0.33 ug/mL, 0.11 ug/mL, 0.04 ug/mL. The plate was coated with 50 uL/well different amounts of BSA-PEG. An alkaline phosphatase conjugated streptavidin as the secondary antibody.



## Specification

<b>Product Description</b>	Rabbit recombinant monoclonal antibody raised against Polyethylene glycol (methoxy group).
<b>Antibody Species</b>	Rabbit
<b>Immunogen</b>	Original antibody is raised against polyethylene glycol (methoxy group) conjugated with KLH.
<b>Sequence</b>	N/A
<b>Form</b>	Liquid
<b>Conjugation</b>	Biotin
<b>Purification</b>	Protein A purification
<b>Isotype</b>	IgG
<b>Recommend Usage</b>	ELISA (0.02-0.5 ug/mL) Flow Cytometry Immunocytochemistry Immunohistochemistry (Formalin/PFA-fixed paraffin-embedded sections) (0.5-2 ug/mL) Immunoprecipitation Western Blotting (0.1-1 ug/mL) The optimal working dilution should be determined by the end user.
<b>Storage Buffer</b>	In PBS (50% glycerol, 1% BSA, 0.09% sodium azide)
<b>Storage Instruction</b>	Store at -20°C. Aliquot to avoid repeated freezing and thawing.
<b>Note</b>	This product contains sodium azide: a POISONOUS AND HAZARDOUS SUBSTANCE which should be handled by trained staff only.

## Applications

- Western Blot

Western blot analysis of BSA and PEGylated BSA with Polyethylene glycol (methoxy group) monoclonal antibody, clone RM105 (Biotin) (Cat # MAB14965) at 0.1 ug/mL working concentration.

- Immunohistochemistry (Formalin/PFA-fixed paraffin-embedded sections)

Immunohistochemical staining (Formalin-fixed paraffin-embedded sections) of mouse liver (mouse had been injected with PEG-BSA for 3 hours) (A), mouse liver (mouse had been injected with BSA for 3 hours) (B), mouse kidney (mouse had been injected with PEG-BSA for 3 hours) (C), and mouse kidney (mouse had been injected with BSA for 3 hours) (D) using Polyethylene glycol (methoxy group) monoclonal antibody, clone RM105 (Biotin) (Cat # MAB14965).

- Immunocytochemistry

- Immunoprecipitation

- Enzyme-linked Immunoabsorbent Assay

ELISA analysis of different PEGylated BSA with Polyethylene glycol (methoxy group) monoclonal antibody, clone RM105 (Biotin) (Cat # MAB14965) at the following concentrations: 1 ug/mL, 0.33 ug/mL, 0.11 ug/mL, 0.04 ug/mL. The plate was coated with 50 uL/well different amounts of BSA-PEG. An alkaline phosphatase conjugated streptavidin as the secondary antibody.

- Flow Cytometry