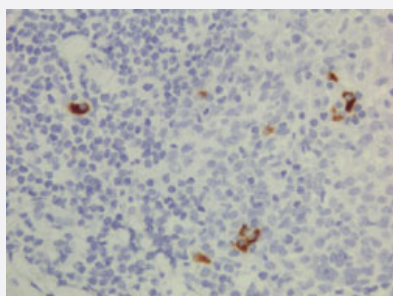


RecomAb™

Human IgG3 monoclonal antibody, clone RM119 (Biotin)

Catalog # MAB14958 Size 50 ug

Applications



Immunohistochemistry (Formalin/PFA-fixed paraffin-embedded sections)

Immunohistochemical staining (Formalin-fixed paraffin-embedded sections) of human lymphoid tissue with Human IgG3 monoclonal antibody, clone RM119 (Biotin) (Cat # MAB14958).

Enzyme-linked Immunoabsorbent Assay

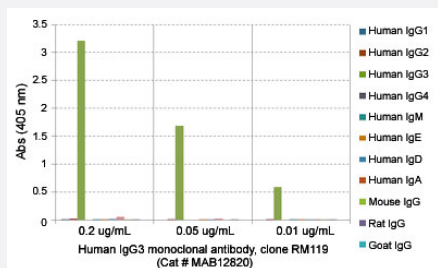
Sandwich ELISA using Human IgG3 monoclonal antibody, clone RM119 (Biotin) (Cat# MAB14958) as the capture antibody (100ng/well), and Human Ig light chain monoclonal antibody, clone RM129 (Biotin) (Cat# MAB12811) as the detection antibody, followed by an HRP conjugated streptavidin.

Enzyme-linked Immunoabsorbent Assay

ELISA analysis of Human IgG3 monoclonal antibody, clone RM119 (Cat # MAB12820) at the following concentrations: 0.2 ug/mL, 0.05 ug/mL, 0.01 ug/mL. The plate was coated with 50 ng/well of different immunoglobulins and the result shows this antibody reacts to human IgG3; no cross reactivity human IgG1, IgG2, IgG4, IgE, IgA, or IgD, mouse IgG, rat IgG, or goat IgG. An alkaline phosphatase conjugated anti-rabbit IgG as the secondary antibody.

Enzyme-linked Immunoabsorbent Assay

A titer ELISA using Human IgG3 monoclonal antibody, clone RM119 (Biotin) (Cat# MAB14958). The plate was coated with different amounts of human IgG3. A serial dilution of RM124 was used as the primary antibody. An alkaline phosphatase conjugated anti-rabbit IgG as the secondary antibody.



Enzyme-linked Immunoabsorbent Assay

Sandwich ELISA using Human IgG3 monoclonal antibody, clone RM119 (Biotin) (Cat# MAB14958) as the capture antibody (100ng/well), and Human Ig light chain monoclonal antibody, clone RM129 (Biotin) (Cat# MAB12811) as the detection antibody, followed by an HRP conjugated streptavidin.

Specification

Product Description	Rabbit recombinant monoclonal antibody raised against human IgG3.
Antibody Species	Rabbit
Immunogen	Original antibody is raised against human IgG3.
Sequence	N/A
Reactivity	Human
Form	Liquid
Conjugation	Biotin
Purification	Protein A purification
Isotype	IgG
Recommend Usage	ELISA (0.05-0.2 ug/well for capture, 0.05-0.2 ug/mL for detection) Flow Cytometry Immunocytochemistry (0.5-2 ug/mL) Immunohistochemistry (Formalin/PFA-fixed paraffin-embedded sections) (0.5-2 ug/mL) The optimal working dilution should be determined by the end user.
Storage Buffer	In PBS (50% glycerol, 1% BSA, 0.09% sodium azide)
Storage Instruction	Store at -20°C. Aliquot to avoid repeated freezing and thawing.
Note	This product contains sodium azide: a POISONOUS AND HAZARDOUS SUBSTANCE which should be handled by trained staff only.

Applications

- Immunohistochemistry (Formalin/PFA-fixed paraffin-embedded sections)

Immunohistochemical staining (Formalin-fixed paraffin-embedded sections) of human lymphoid tissue with Human IgG3 monoclonal antibody, clone RM119 (Biotin) (Cat # MAB14958).

- Immunocytochemistry

- Enzyme-linked Immunoabsorbent Assay

Sandwich ELISA using Human IgG3 monoclonal antibody, clone RM119 (Biotin) (Cat# MAB14958) as the capture antibody (100ng/well), and Human Ig light chain monoclonal antibody, clone RM129 (Biotin) (Cat# MAB12811) as the detection antibody, followed by an HRP conjugated streptavidin.

- Enzyme-linked Immunoabsorbent Assay

ELISA analysis of Human IgG3 monoclonal antibody, clone RM119 (Cat # MAB12820) at the following concentrations: 0.2 ug/mL, 0.05 ug/mL, 0.01 ug/mL. The plate was coated with 50 ng/well of different immunoglobulins and the result shows this antibody reacts to human IgG3; no cross reactivity human IgG1, IgG2, IgG4, IgE, IgA, or IgD, mouse IgG, rat IgG, or goat IgG. An alkaline phosphatase conjugated anti-rabbit IgG as the secondary antibody.

- Enzyme-linked Immunoabsorbent Assay

A titer ELISA using Human IgG3 monoclonal antibody, clone RM119 (Biotin) (Cat# MAB14958). The plate was coated with different amounts of human IgG3. A serial dilution of RM124 was used as the primary antibody. An alkaline phosphatase conjugated anti-rabbit IgG as the secondary antibody.

- Enzyme-linked Immunoabsorbent Assay

Sandwich ELISA using Human IgG3 monoclonal antibody, clone RM119 (Biotin) (Cat# MAB14958) as the capture antibody (100ng/well), and Human Ig light chain monoclonal antibody, clone RM129 (Biotin) (Cat# MAB12811) as the detection antibody, followed by an HRP conjugated streptavidin.

- Flow Cytometry

Gene Info — IGHG3

Entrez GeneID	3502
Protein Accession#	P01860
Gene Name	IGHG3
Gene Alias	DKFZp686H11213, FLJ39988, FLJ40036, FLJ40253, FLJ40587, FLJ40789, FLJ40834, IgG3, MGC45809
Gene Description	immunoglobulin heavy constant gamma 3 (G3m marker)
Omim ID	147120

Gene Ontology

[Hyperlink](#)

Other Designations

-

Disease

- [Asthma](#)