

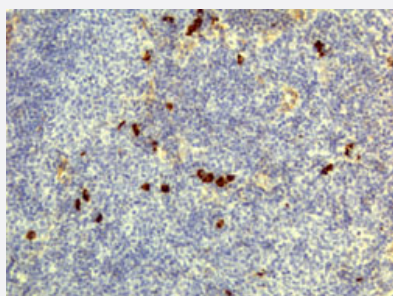
RecomAb™

Human IgD monoclonal antibody, clone RM123 (Biotin)

Catalog # MAB14954

Size 50 ug

Applications



Immunohistochemistry (Formalin/PFA-fixed paraffin-embedded sections)

Immunohistochemical staining (Formalin-fixed paraffin-embedded sections) of human lymphoid tissue with Human IgD monoclonal antibody, clone RM123 (Biotin) (Cat # MAB14954).

Enzyme-linked Immunoabsorbent Assay

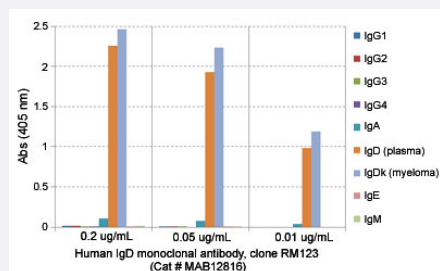
A titer ELISA using Human IgD monoclonal antibody, clone RM123 (Biotin) (Cat# MAB14954). The plate was coated with different amounts of human IgD (from plasma). A serial dilution of Cat# MAB14954 was used as the primary antibody. An alkaline phosphatase conjugated anti- rabbit IgG as the secondary antibody.

Enzyme-linked Immunoabsorbent Assay

Sandwich ELISA using Human IgD monoclonal antibody, clone RM123 (Biotin) (Cat# MAB14954) as the capture antibody (100ng/well), and Human Ig light chain monoclonal antibody, clone RM129 (Biotin) (Cat# MAB12811) as the detection antibody, followed by an alkaline phosphatase conjugated streptavidin.

Enzyme-linked Immunoabsorbent Assay

ELISA analysis of Human IgD monoclonal antibody, clone RM123 (Cat # MAB12816) at the following concentrations: 0.2 ug/mL, 0.05 ug/mL, 0.01 ug/mL. The plate was coated with 50 ng/well of different immunoglobulins and the result shows this antibody reacts to human IgD kappa; no cross reactivity human IgG, IgM, IgA, or IgE. An alkaline phosphatase conjugated anti-rabbit IgG as the secondary antibody.



Specification

Product Description	Rabbit recombinant monoclonal antibody raised against human IgD.
Antibody Species	Rabbit
Immunogen	Original antibody is raised against human IgD.
Sequence	N/A
Reactivity	Human
Form	Liquid
Conjugation	Biotin
Purification	Protein A purification
Isotype	IgG
Recommend Usage	ELISA (0.025-0.2 ug/well for capture, 0.01-0.1 ug/mL for detection) Flow Cytometry Immunocytochemistry (0.5-2 ug/mL) Immunohistochemistry (Formalin/PFA-fixed paraffin-embedded sections) (0.5-2 ug/mL) The optimal working dilution should be determined by the end user.
Storage Buffer	In PBS (50% glycerol, 1% BSA, 0.09% sodium azide)
Storage Instruction	Store at -20°C. Aliquot to avoid repeated freezing and thawing.
Note	This product contains sodium azide: a POISONOUS AND HAZARDOUS SUBSTANCE which should be handled by trained staff only.

Applications

- Immunohistochemistry (Formalin/PFA-fixed paraffin-embedded sections)

Immunohistochemical staining (Formalin-fixed paraffin-embedded sections) of human lymphoid tissue with Human IgD monoclonal antibody, clone RM123 (Biotin) (Cat # MAB14954).

- Immunocytochemistry

- Enzyme-linked Immunoabsorbent Assay

A titer ELISA using Human IgD monoclonal antibody, clone RM123 (Biotin) (Cat# MAB14954). The plate was coated with different amounts of human IgD (from plasma). A serial dilution of Cat# MAB14954 was used as the primary antibody. An alkaline phosphatase conjugated anti-rabbit IgG as the secondary antibody.

- Enzyme-linked Immunoabsorbent Assay

Sandwich ELISA using Human IgD monoclonal antibody, clone RM123 (Biotin) (Cat# MAB14954) as the capture antibody (100ng/well), and Human Ig light chain monoclonal antibody, clone RM129 (Biotin) (Cat# MAB12811) as the detection antibody, followed by an alkaline phosphatase conjugated streptavidin.

- Enzyme-linked Immunoabsorbent Assay

ELISA analysis of Human IgD monoclonal antibody, clone RM123 (Cat # MAB12816) at the following concentrations: 0.2 ug/mL, 0.05 ug/mL, 0.01 ug/mL. The plate was coated with 50 ng/well of different immunoglobulins and the result shows this antibody reacts to human IgD kappa; no cross reactivity human IgG, IgM, IgA, or IgE. An alkaline phosphatase conjugated anti-rabbit IgG as the secondary antibody.

- Flow Cytometry

Gene Info — IGHD

Entrez GeneID	3495
Protein Accession#	P01880
Gene Name	IGHD
Gene Alias	FLJ00382, FLJ46727, MGC29633
Gene Description	immunoglobulin heavy constant delta
Omim ID	147170
Gene Ontology	Hyperlink
Other Designations	-