

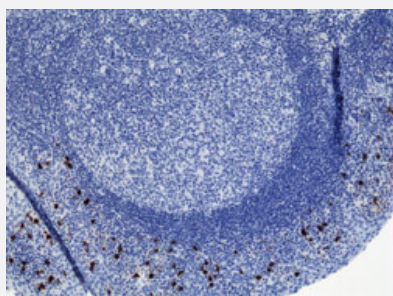
RecomAb™

Human IgA2 monoclonal antibody, clone RM125 (Biotin)

Catalog # MAB14953

Size 50 ug

Applications



Immunohistochemistry (Formalin/PFA-fixed paraffin-embedded sections)

Immunohistochemical staining (Formalin-fixed paraffin-embedded sections) of human tonsil with Human IgA2 monoclonal antibody, clone RM125 (Biotin) (Cat # MAB14953).

Enzyme-linked Immunoabsorbent Assay

Sandwich ELISA using Human IgA2 monoclonal antibody, clone RM125 (Biotin) (Cat# MAB14953) as the capture antibody (100ng/well), and Human Ig light chain monoclonal antibody, clone RM129 (Biotin) (Cat# MAB12811) as the detection antibody, followed by an alkaline phosphatase conjugated streptavidin.

Enzyme-linked Immunoabsorbent Assay

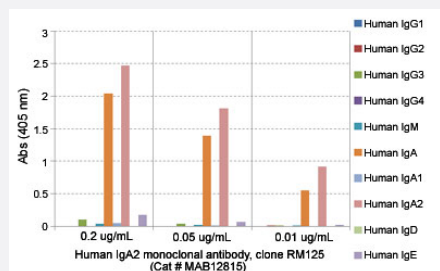
A titer ELISA using Human IgA2 monoclonal antibody, clone RM125 (Biotin) (Cat# MAB14953). The plate was coated with different amounts of human IgA2. A serial dilution of Cat# MAB14953 was used as the primary antibody. An alkaline phosphatase conjugated anti-rabbit IgG as the secondary antibody.

Enzyme-linked Immunoabsorbent Assay

ELISA analysis of Human IgA2 monoclonal antibody, clone RM125 (Cat # MAB12815) at the following concentrations: 0.2 ug/mL, 0.05 ug/mL, 0.01 ug/mL. The plate was coated with 50 ng/well of different immunoglobulins and the result shows this antibody reacts to human IgA2; no cross reactivity human IgA1, IgG, IgM, IgD, or IgE. An alkaline phosphatase conjugated anti-rabbit IgG as the secondary antibody.

Enzyme-linked Immunoabsorbent Assay

Sandwich ELISA using Human IgA2 monoclonal antibody, clone RM125 (Biotin) (Cat# MAB14953) as the capture antibody (100ng/well), and Human Ig light chain monoclonal antibody, clone RM129 (Biotin) (Cat# MAB12811) as the detection antibody, followed by an alkaline phosphatase conjugated streptavidin.



Specification

Product Description	Rabbit recombinant monoclonal antibody raised against human IgA2.
Antibody Species	Rabbit
Immunogen	Original antibody is raised against human IgA2.
Sequence	N/A
Reactivity	Human
Form	Liquid
Conjugation	Biotin
Purification	Protein A purification
Isotype	IgG
Recommend Usage	ELISA (0.05-0.2 ug/well for capture, 0.05-0.2 ug/mL for detection) Flow Cytometry Immunocytochemistry (0.5-2 ug/mL) Immunohistochemistry (Formalin/PFA-fixed paraffin-embedded sections) (0.1-1 ug/mL) The optimal working dilution should be determined by the end user.
Storage Buffer	In PBS (50% glycerol, 1% BSA, 0.09% sodium azide)

Storage Instruction

Store at -20°C.
Aliquot to avoid repeated freezing and thawing.

Note

This product contains sodium azide: a POISONOUS AND HAZARDOUS SUBSTANCE which should be handled by trained staff only.

Applications

- Immunohistochemistry (Formalin/PFA-fixed paraffin-embedded sections)

Immunohistochemical staining (Formalin-fixed paraffin-embedded sections) of human tonsil with Human IgA2 monoclonal antibody, clone RM125 (Biotin) (Cat # MAB14953).

- Immunocytochemistry

- Enzyme-linked Immunoabsorbent Assay

Sandwich ELISA using Human IgA2 monoclonal antibody, clone RM125 (Biotin) (Cat# MAB14953) as the capture antibody (100ng/well), and Human Ig light chain monoclonal antibody, clone RM129 (Biotin) (Cat# MAB12811) as the detection antibody, followed by an alkaline phosphatase conjugated streptavidin.

- Enzyme-linked Immunoabsorbent Assay

A titer ELISA using Human IgA2 monoclonal antibody, clone RM125 (Biotin) (Cat# MAB14953). The plate was coated with different amounts of human IgA2. A serial dilution of Cat# MAB14953 was used as the primary antibody. An alkaline phosphatase conjugated anti-rabbit IgG as the secondary antibody.

- Enzyme-linked Immunoabsorbent Assay

ELISA analysis of Human IgA2 monoclonal antibody, clone RM125 (Cat # MAB12815) at the following concentrations: 0.2 ug/mL, 0.05 ug/mL, 0.01 ug/mL. The plate was coated with 50 ng/well of different immunoglobulins and the result shows this antibody reacts to human IgA2; no cross reactivity human IgA1, IgG, IgM, IgD, or IgE. An alkaline phosphatase conjugated anti-rabbit IgG as the secondary antibody.

- Enzyme-linked Immunoabsorbent Assay

Sandwich ELISA using Human IgA2 monoclonal antibody, clone RM125 (Biotin) (Cat# MAB14953) as the capture antibody (100ng/well), and Human Ig light chain monoclonal antibody, clone RM129 (Biotin) (Cat# MAB12811) as the detection antibody, followed by an alkaline phosphatase conjugated streptavidin.

- Flow Cytometry

Gene Info — IGHA2

Entrez GeneID[3494](#)**Protein Accession#**[P01877](#)

Gene Name	IGHA2
Gene Alias	-
Gene Description	immunoglobulin heavy constant alpha 2 (A2m marker)
Omim ID	147000
Gene Ontology	Hyperlink
Other Designations	-